

Collaro | Subway 3.0 | Architectura | O.novo



EN Installation instructions /
without fixation

ZH 安装说明 – 无固定装置



1 General Safety Instructions



Warning!

The intended use of the toilets should only serve hygienic purposes and excludes all other purposes. The toilets are not suitable for standing upon or for the disposal of food remains. In the event of non-adherence to the safety instructions, the manufacturer is not liable for loss or damage which did occur during installation.



Warning!

To avoid water leakage, please switch off the water supply before you start the installation



Warning!

Risk of personal injury or product damage.
Vitreous china can break and chip if you overtighten bolts and nuts
Handle vitreous china products very carefully



Warning!

Danger of Damage
It is forbidden to use epoxy or other sealing materials which will enlarge after hardening like cement for installation.



Warning!

Danger of Damage
Do not use in-tank cleaners. Products containing chlorine (calcium hypochlorite) can seriously damage fittings in the tank. This damage can cause leakage and property damage.



Notice!

Before you start the installation, please read these instructions carefully to familiarize yourself with the required tools, materials, and installation sequences.
Follow the sections that refer to your particular installation. This will help you to avoid unnecessary and costly mistakes. In addition to proper installation, read all operating and safety instructions.



Notice!

The sanitary object has to be installed according to the attached installation instructions. If the ceramic sanitary ware is not installed according to the provided installation instructions, the producer does not cover any damage or loss, which did occur during installation.



Notice!

Before you start the installation please check, if all defined accessories are contained in the package. If this is not the case, please contact your local distributor or the seller from whom you get the product.



Notice!

Do not bump the vitreous china with great force to prevent it from damage and leakage.



Notice!

Please do not flush newspapers, paper diapers, sanitary pads and other materials causing blockage into the toilet.



Notice!

Do not use in the environment below 0 °C.



Notice!

Clean up with a non-abrasive cleaner. Please do not use hard materials (like scouring pad) to clean product surface, especially the product logo.

1 产品安装使用安全注意事项



警告!

座便器的使用应仅限于卫生洁净目的，而不是其他用处，例如梯子等攀爬工具，或处理剩余饭食等垃圾。如若未遵守所提供的产品安装使用安全说明，并因此导致产品损坏或其他损失，产品生产商将对此不负任何责任。



警告!

请于安装前关掉水阀以避免漏水。



警告!

警告: 提防身体受伤或产品破裂。

请小心处理釉面陶瓷产品

不可把螺母和螺栓上得过紧 以免产品破损或崩裂



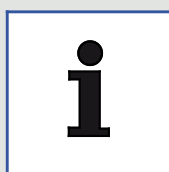
警告!

禁止使用硬化后会膨胀的密封材料安装本产品，如大理石胶，环氧树脂胶和水泥等。



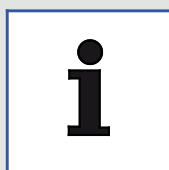
警告!

请勿在水箱内使用清洁剂。含氯(次氯酸钙)的清洁剂会严重影响水箱内的装置，从而引起渗漏，或对楼宇结构造成破坏。



注意

请于安装前仔细阅读此安装说明并熟悉所需的工具，材料以及安装顺序。按照相应的安装步骤进行安装。如此，将帮您避免不必要错误以及所产生的额外费用。此外，请务必阅读产品操作安全说明。



注意

此卫生陶瓷产品需按照所附的安装说明进行安装。如若未按所提供的安装说明进行安装，并因此导致产品损坏或其他损失，产品生产商将对此不负任何责任。



注意

请于安装前仔细检查包装箱里是否含有所有指定的产品配件。如果缺失，请联系当地经销商或从所购买产品的供应商。



注意

请不要重力撞击陶瓷，以避免破损漏水。



注意

请不要向座便器内冲入报纸，纸尿裤，妇用卫生巾等容易堵塞的物品。



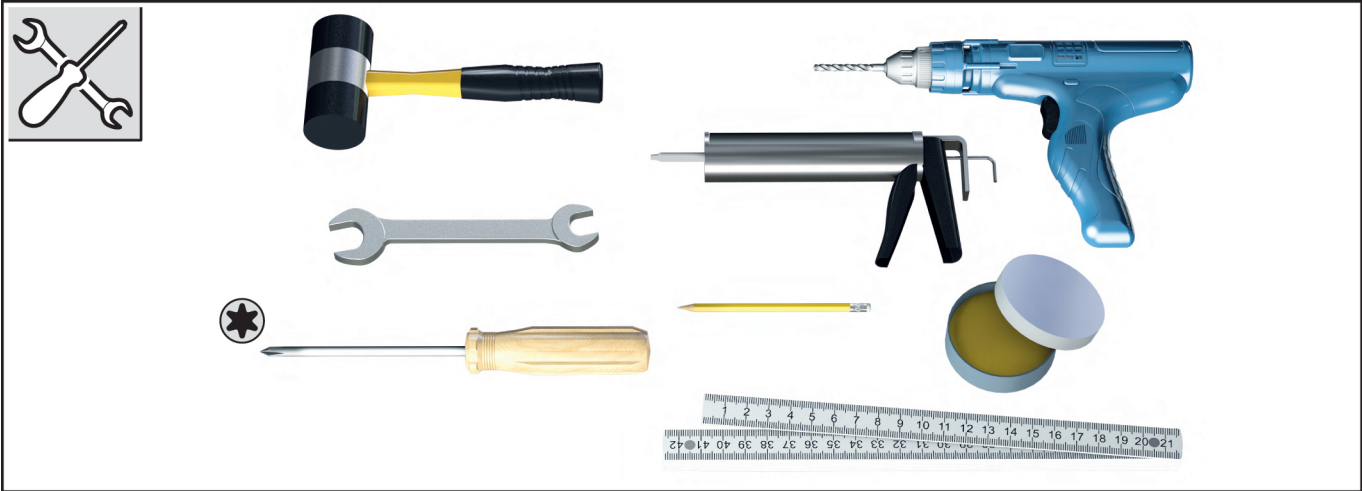
注意

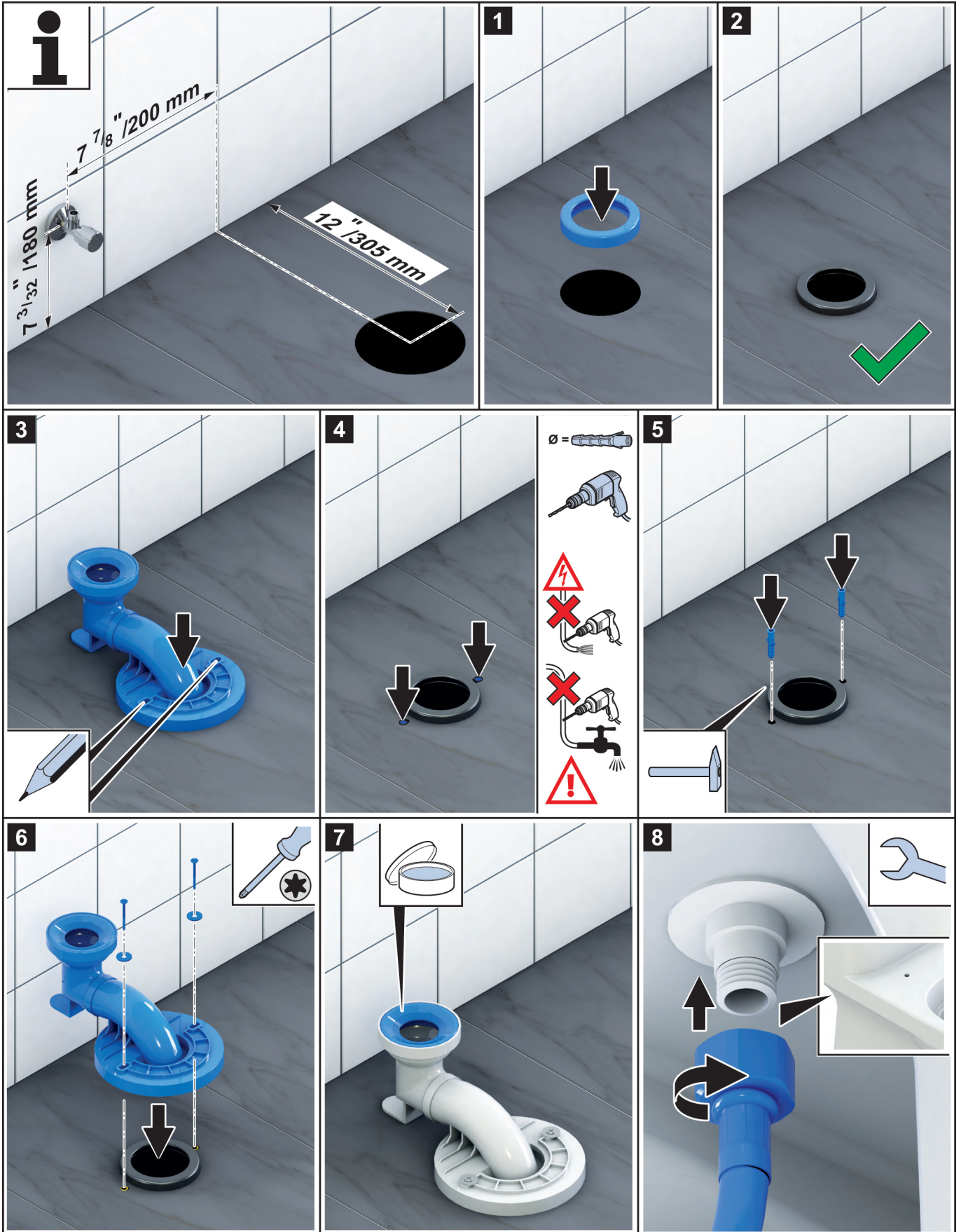
请不要在0°C以下的环境中使用。



注意

请勿使用有腐蚀性的厕所清洁剂。请勿使钢丝球等硬的物体擦拭产品表面，特别是产品商标处。







VILLEROY & BOCH

GERMANY

*Villeroy & Boch AG
Bathroom and Wellness Division
Headquarters
66693 Mettlach
Germany*

Tel: +49 (0) 68 64 / 81 0

Fax: +49 (0) 68 64 / 81 1484

CHINA

*Villeroy & Boch Trading (Shanghai) Co., Ltd.
10F, No8, Lane 555, Gu Bei Road, Chang Ning District
200051 Shanghai, China*

Phone: +86 21 400 820 1748

Email: info.china@villeroy-boch.com