

Deck Mounted Mixer

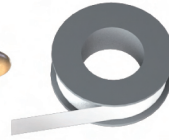
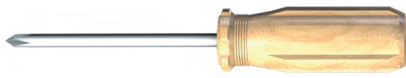
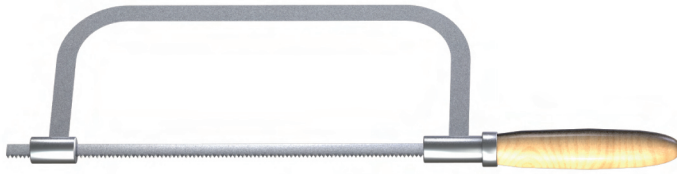
General
Instruction

Villeroy & Boch

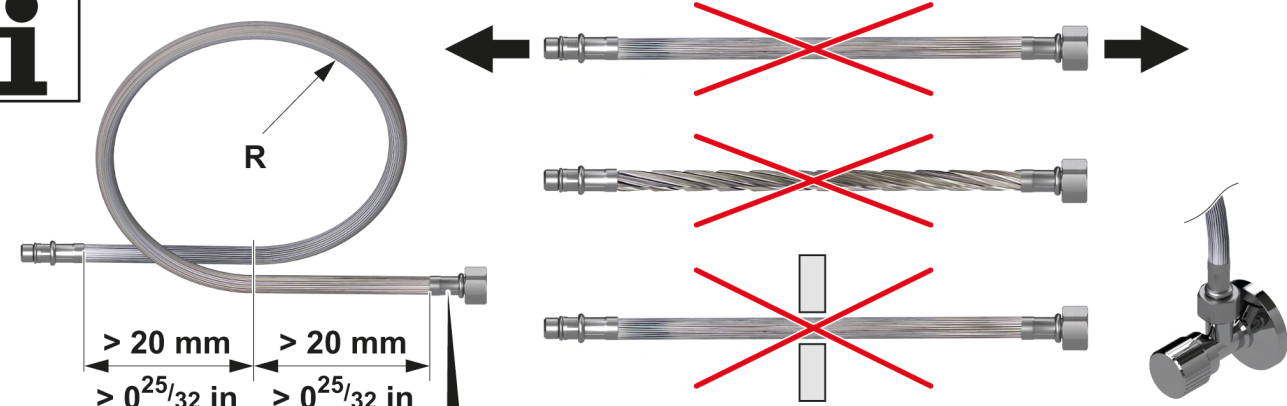


- | | | | |
|---------------------------------------|---------------------------------|---------------------------------|----------------------------------|
| DE Montageanleitung | AR دليل التركيب | HU Szerelési útmutató | PT Instruções de montagem |
| EN Installation instructions | BG Ръководство за монтаж | ID Petunjuk pemasangan | RO Manual de montaj |
| ES Instrucciones de montaje | CS Návod k montáži | JA 取付説明書 | SK Návod na montáž |
| FR Instructions de montage | DA Monteringsvejledning | KO 설치 가이드 | SL Navodila za montažo |
| IT Istruzioni per il montaggio | ET Paigaldusjuhend | LT Montavimo instrukcija | SV Monteringsanvisning |
| NL Montagehandleiding | EL Οδηγίες τοποθέτησης | LV Montāžas instrukcija | TH คู่มือการติดตั้ง |
| RU Инструкция по монтажу | FI Asennusohje | NO Monteringsanvisning | TR Montaj kılavuzu |
| ZH 安装说明 | HR Uputa za montažu | PL Instrukcja montażu | UK Інструкція з монтажу |

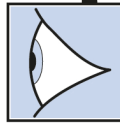








i




| | mm | in |
|-------|--------|-------------------------------------|
| DN 6 | R > 25 | R > 0 ⁶³ / ₆₄ |
| DN 8 | R > 30 | R > 1 ³ / ₁₆ |
| DN 10 | R > 35 | R > 1 ³ / ₈ |

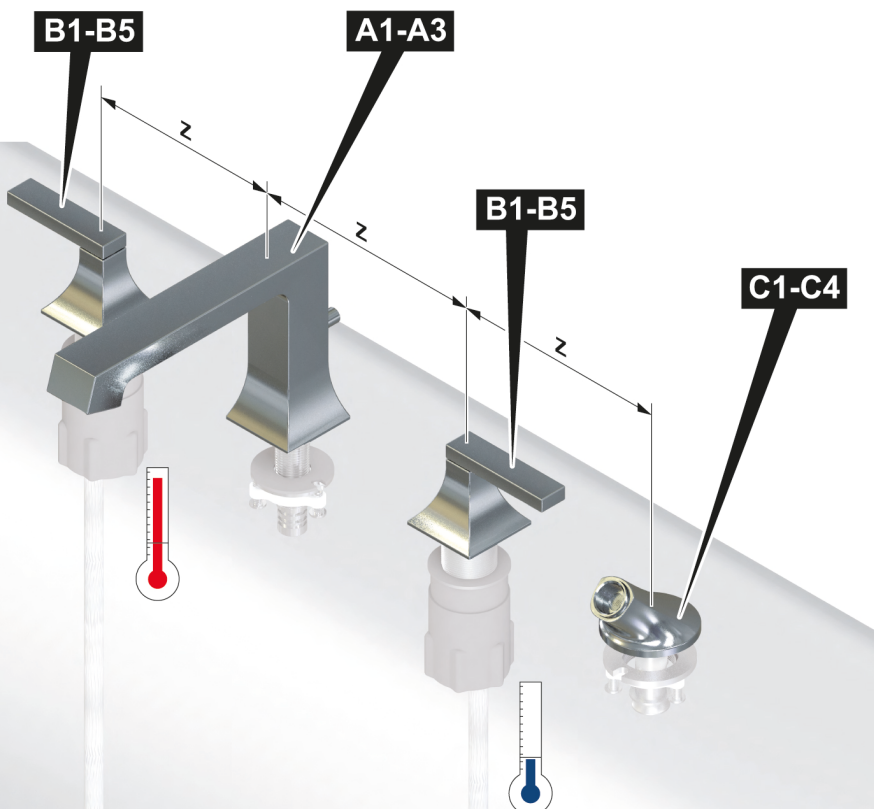


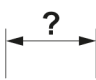
 100 kPa (1 bar) - 500 kPa (5 bar)
 < 1000 kPa (10 bar)

 < 70 °C < 158 °F
 ~ 60 °C ~ 140 °F

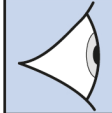
 ~ 10 °C
 ~ 50 °F

i 1

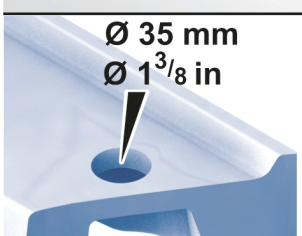


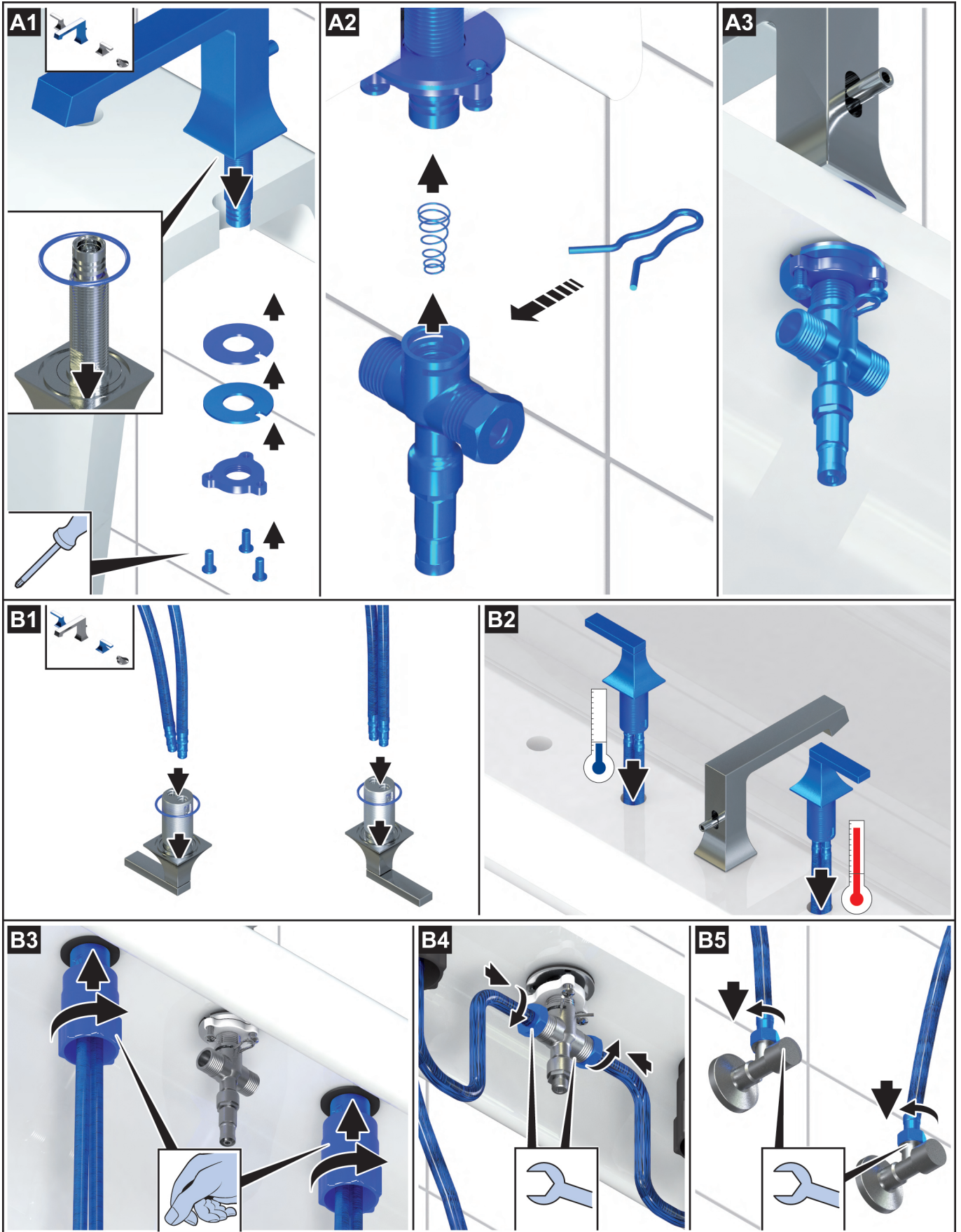
1. 

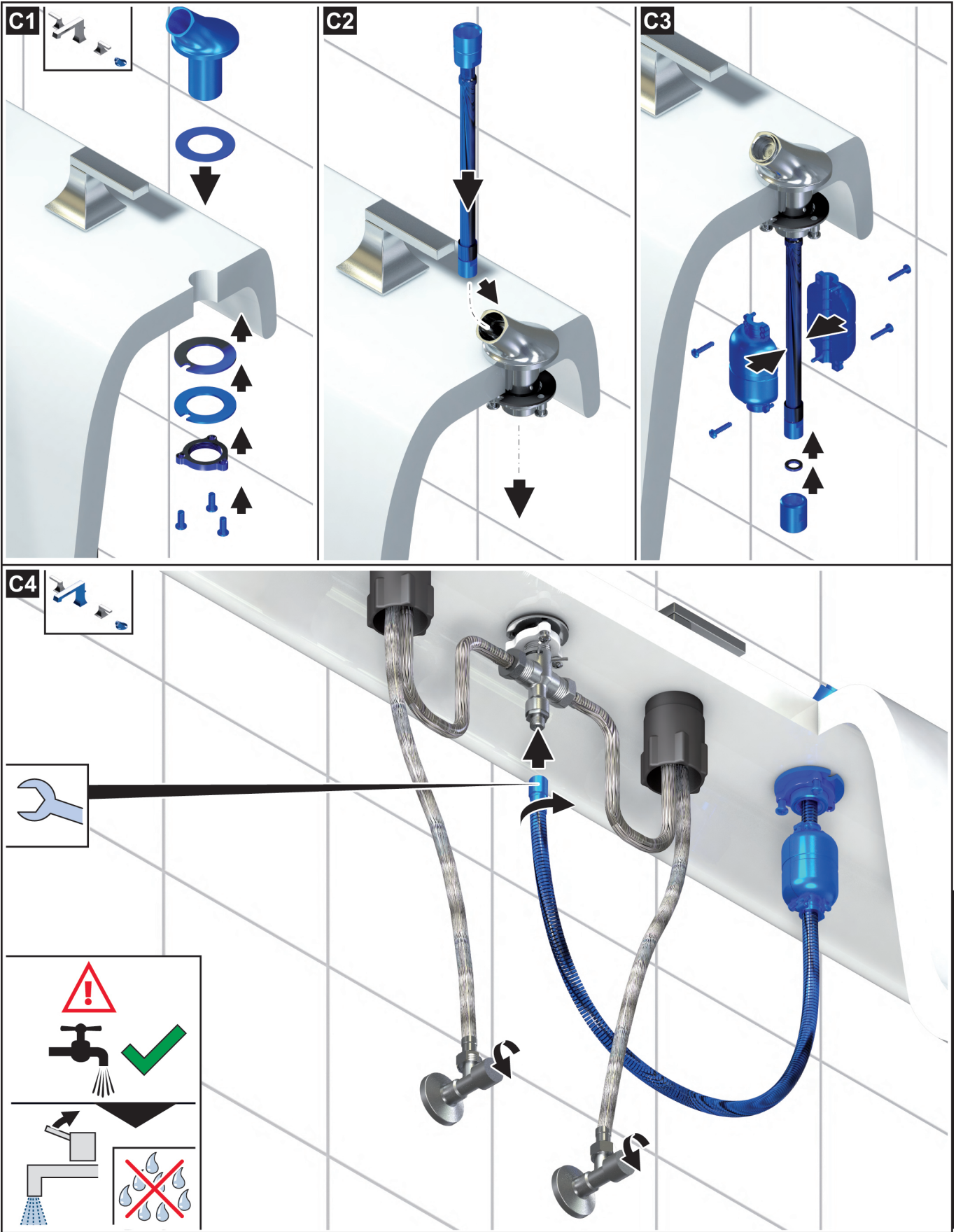
2. m.villeroy-boch.com

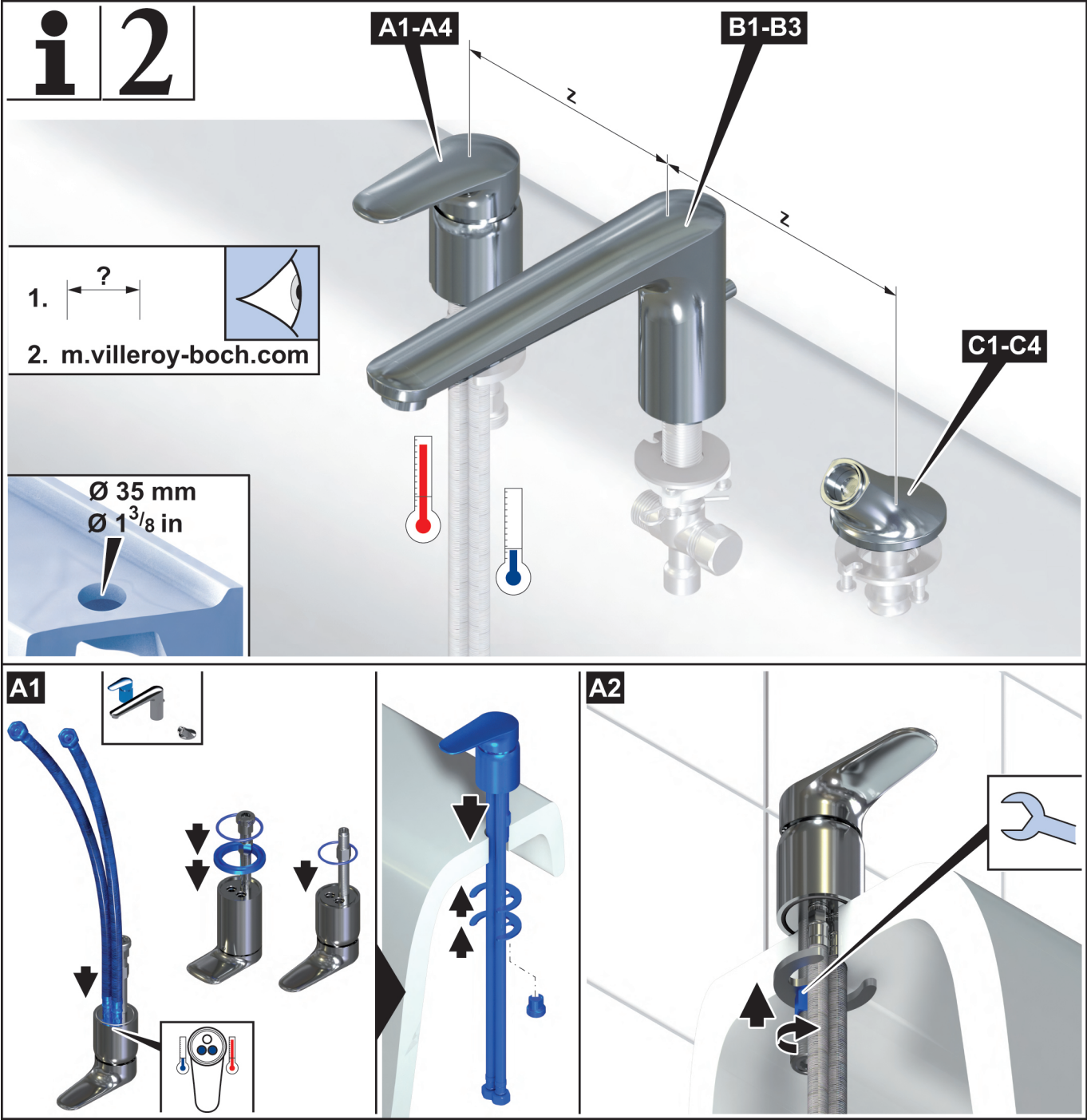


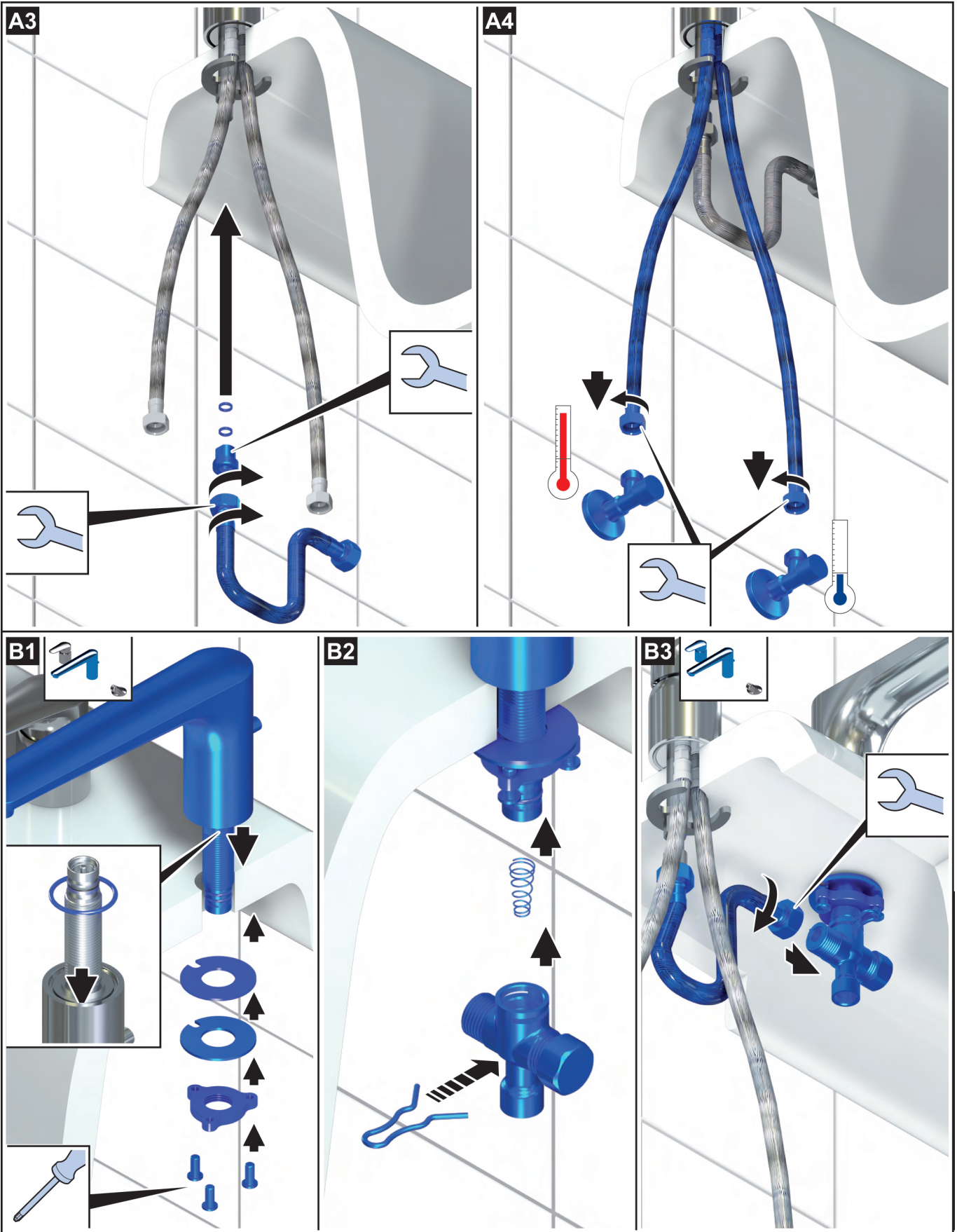
Ø 35 mm
 Ø 1³/₈ in

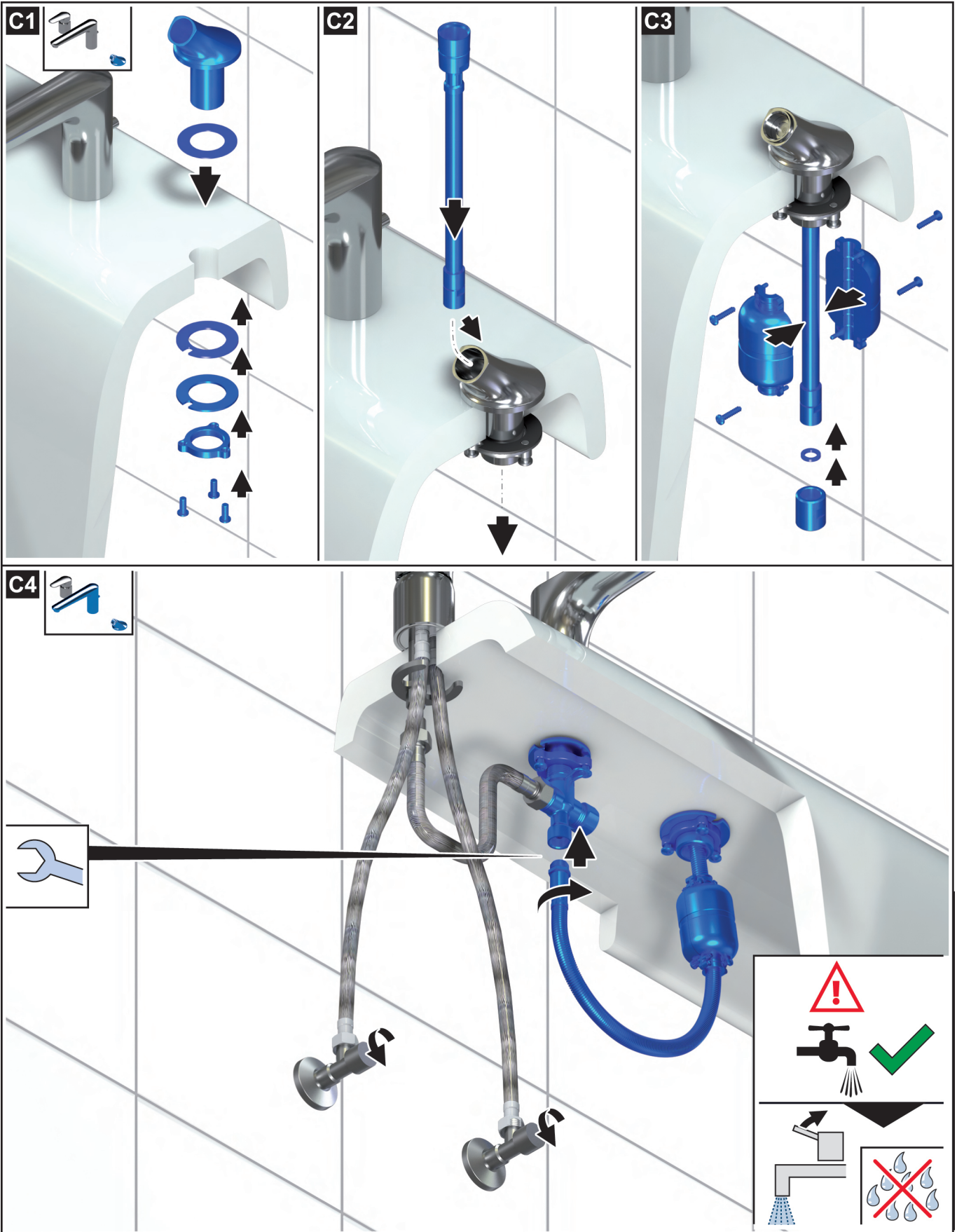


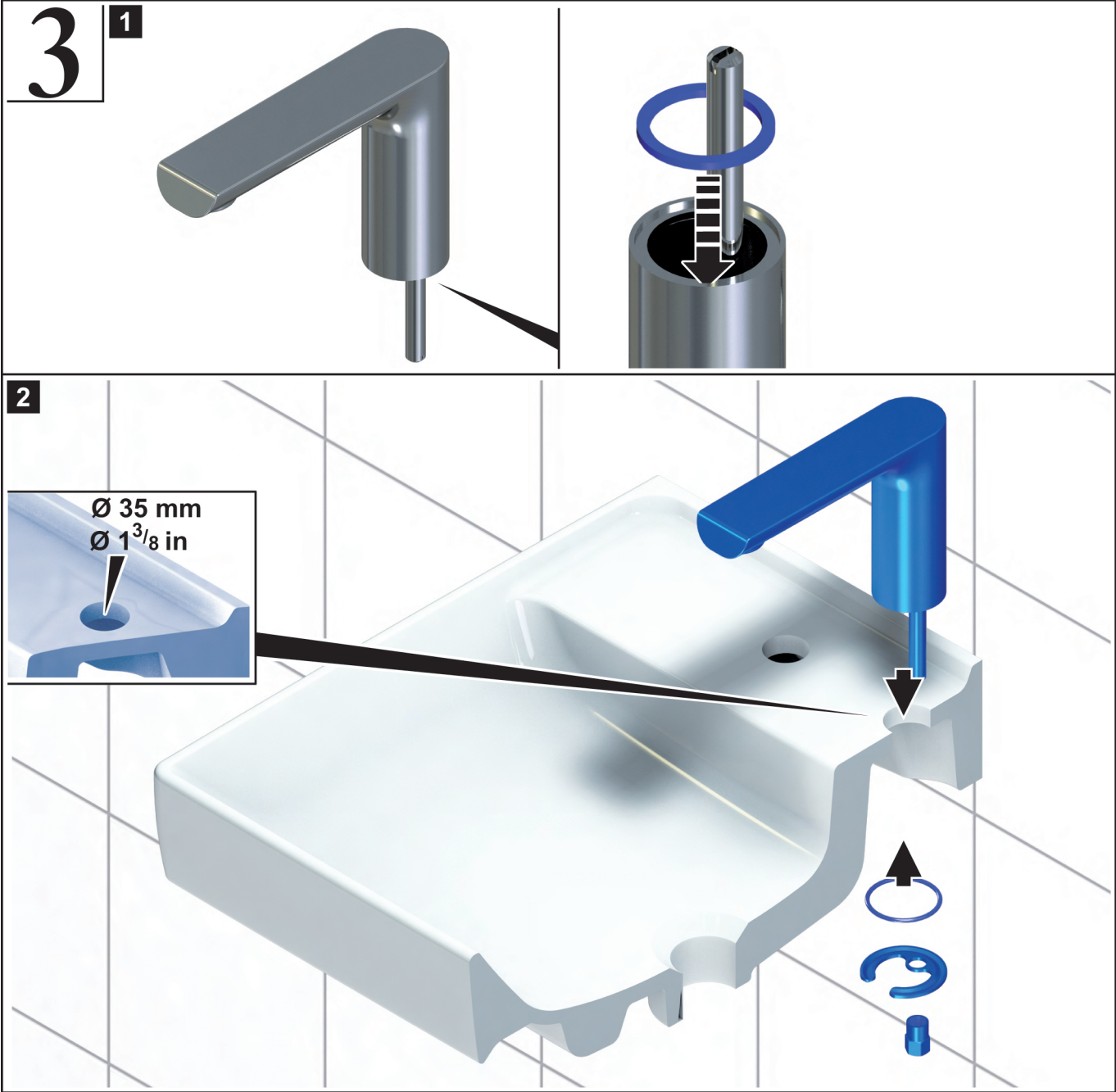


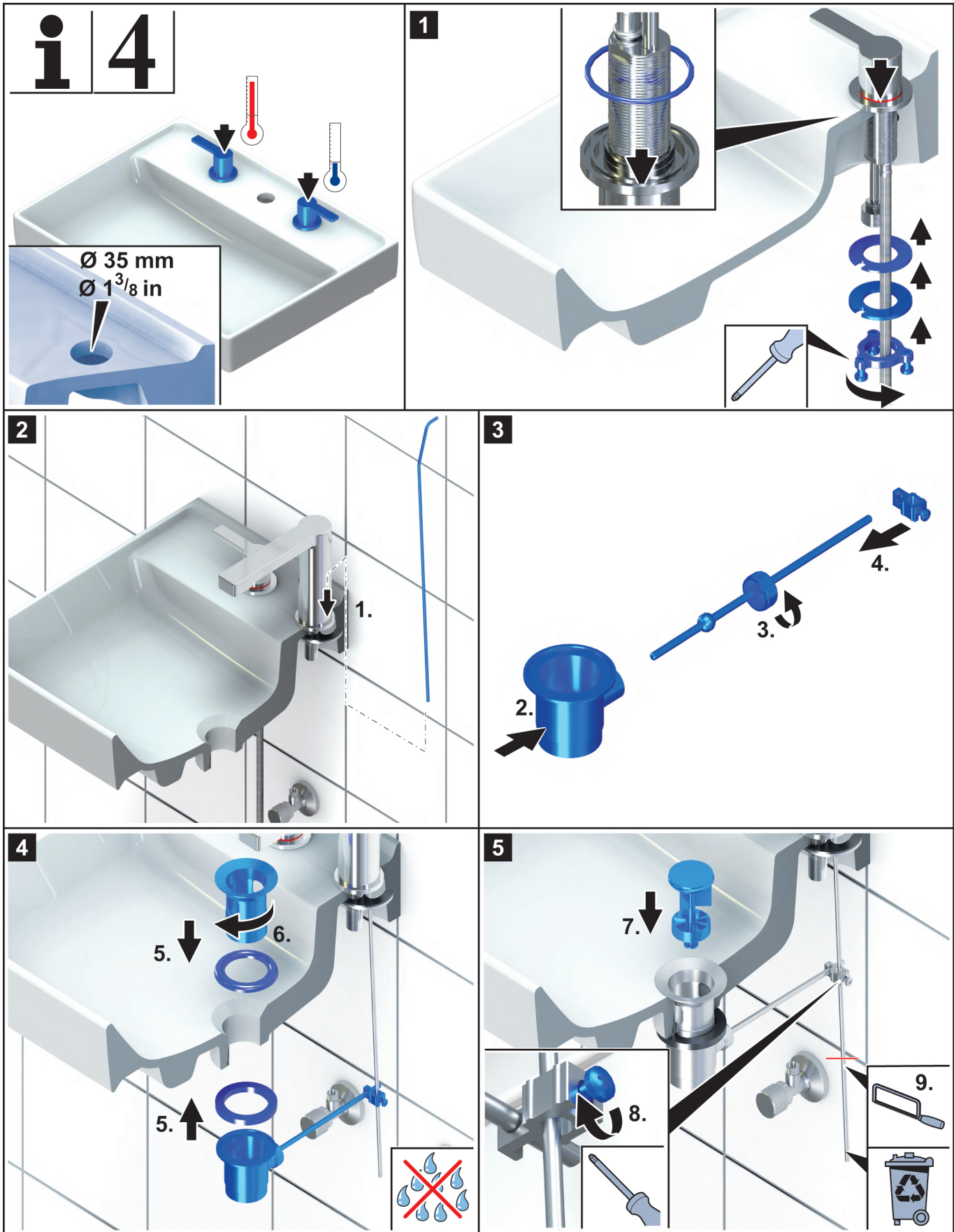


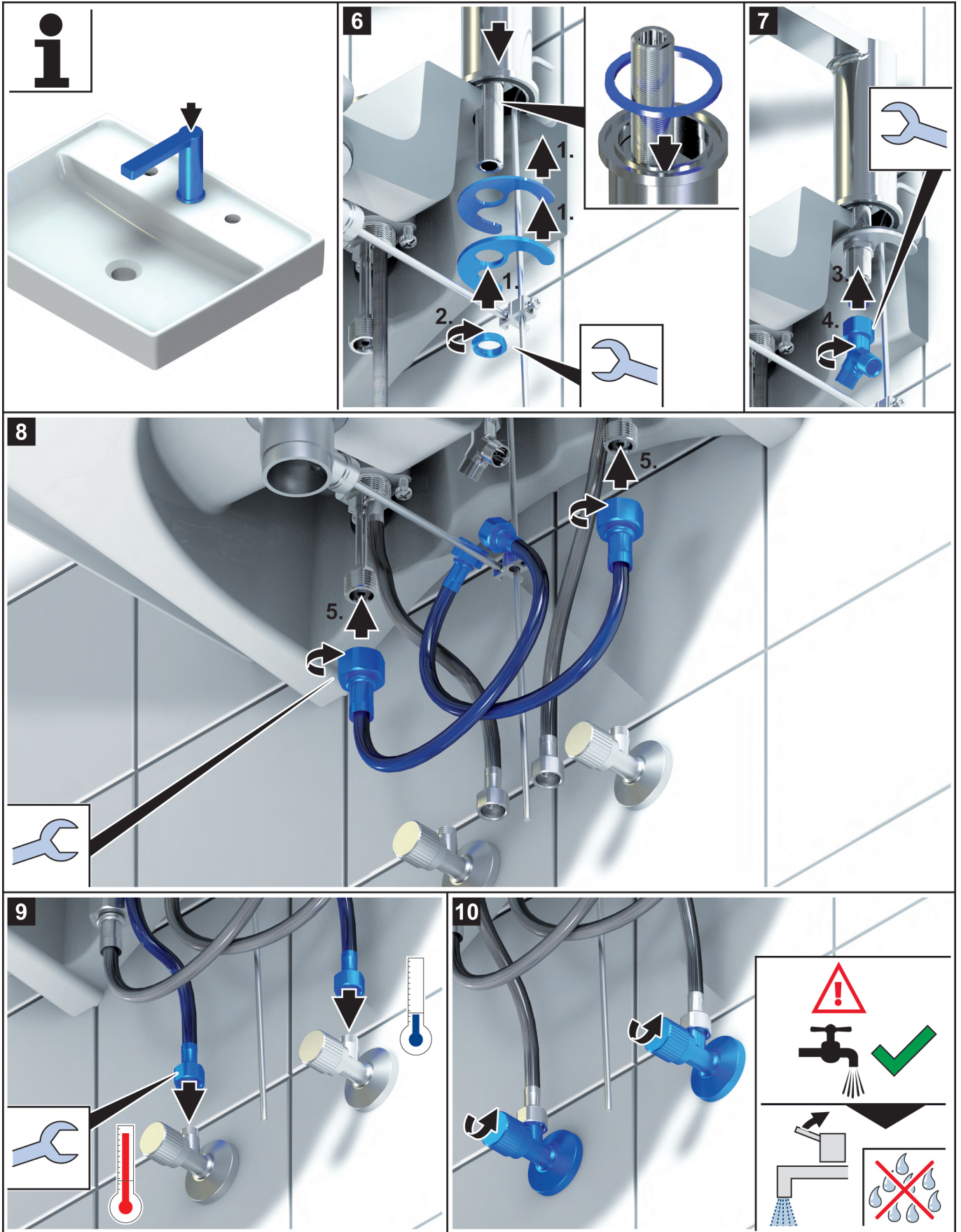


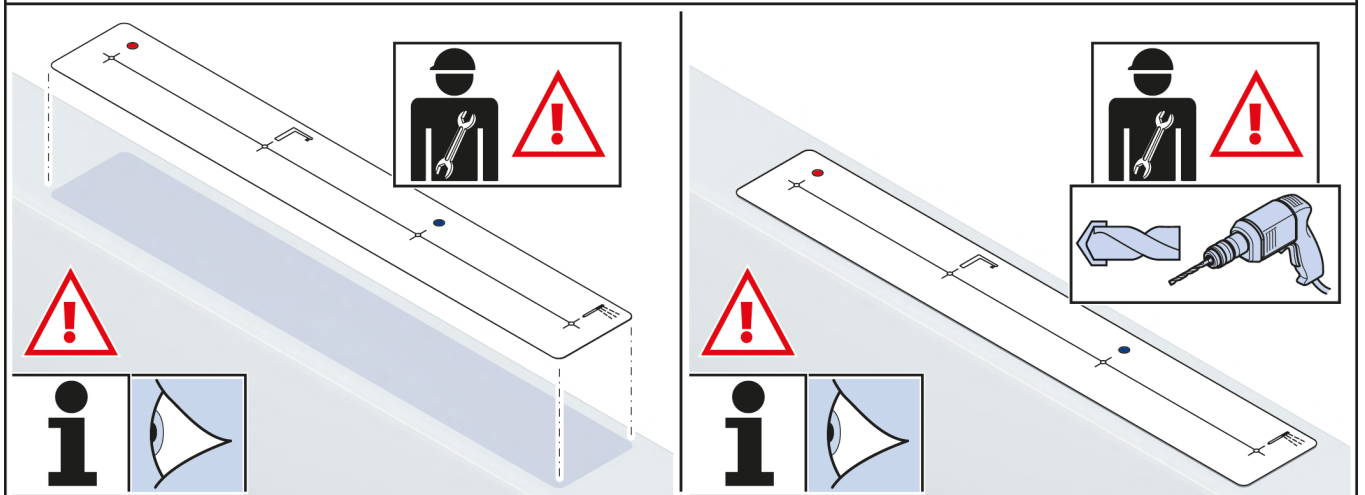
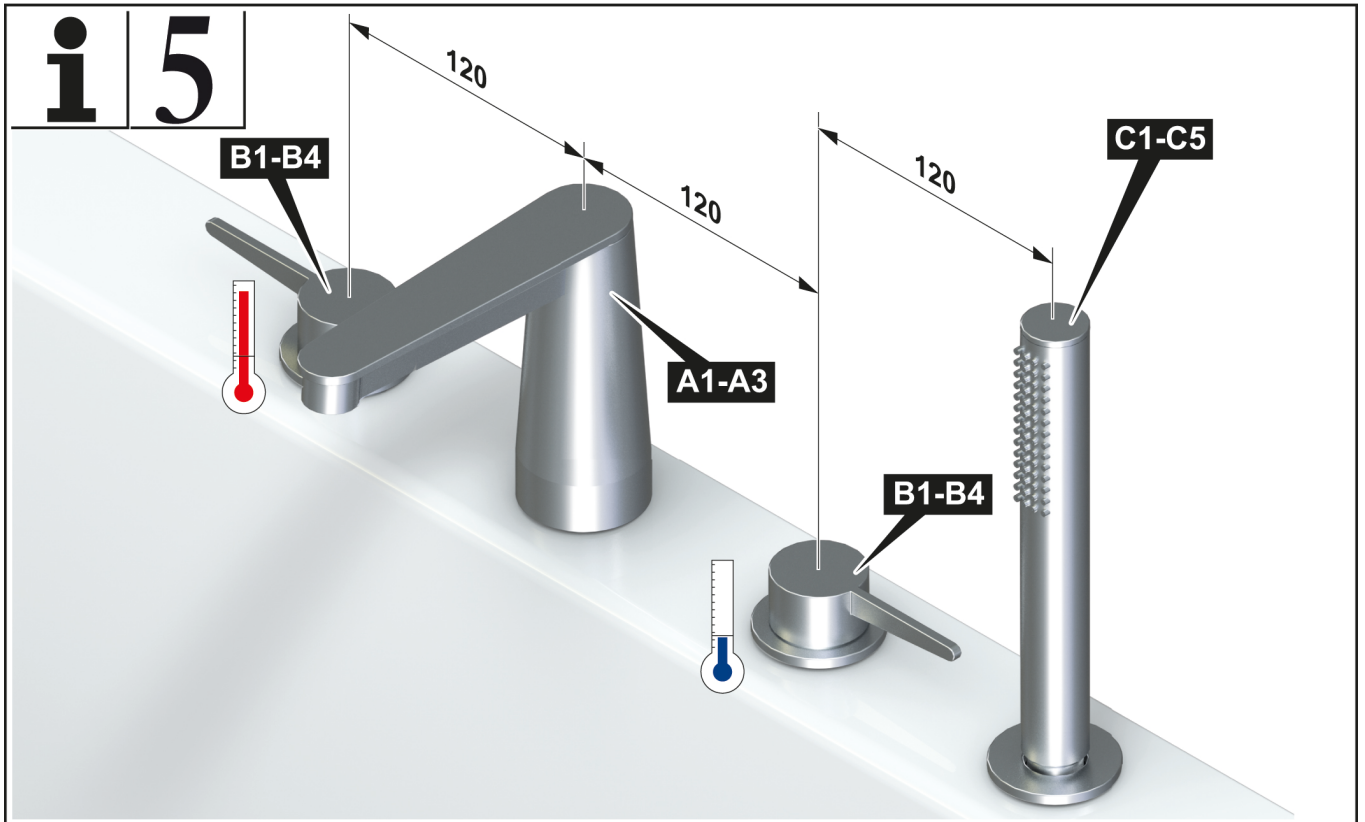


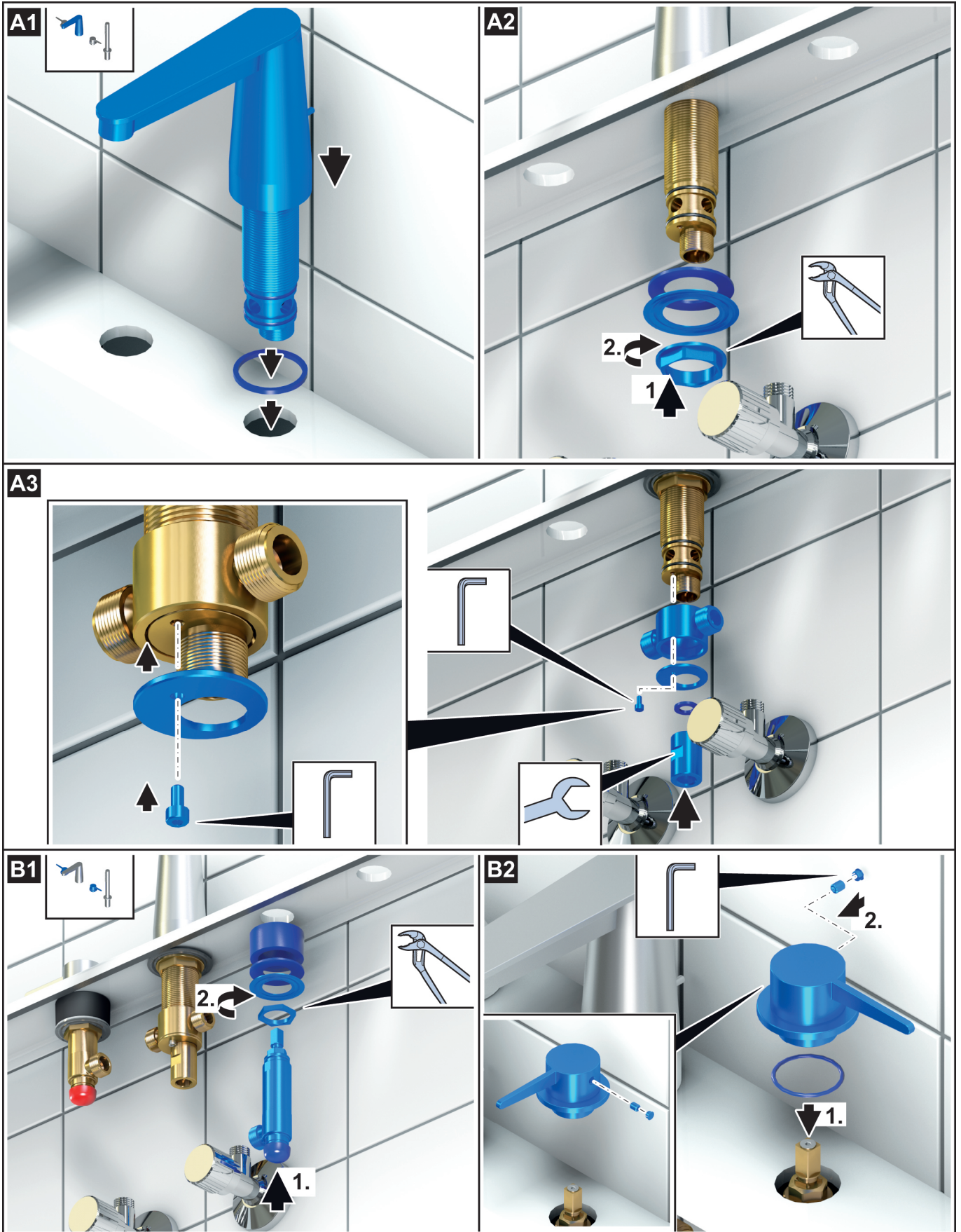


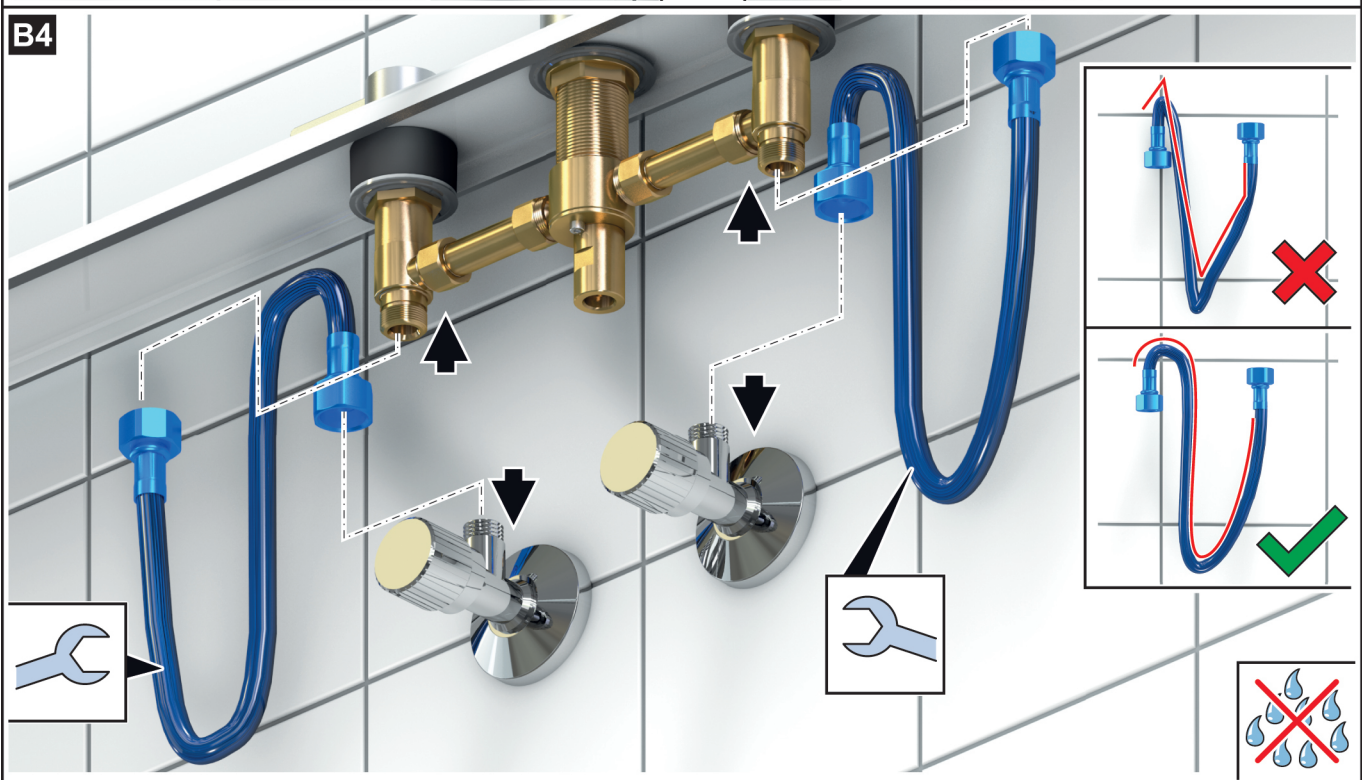
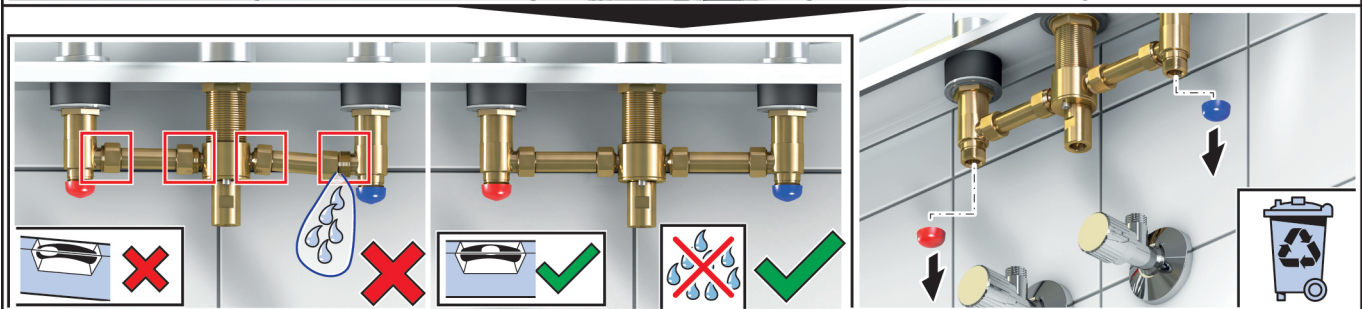
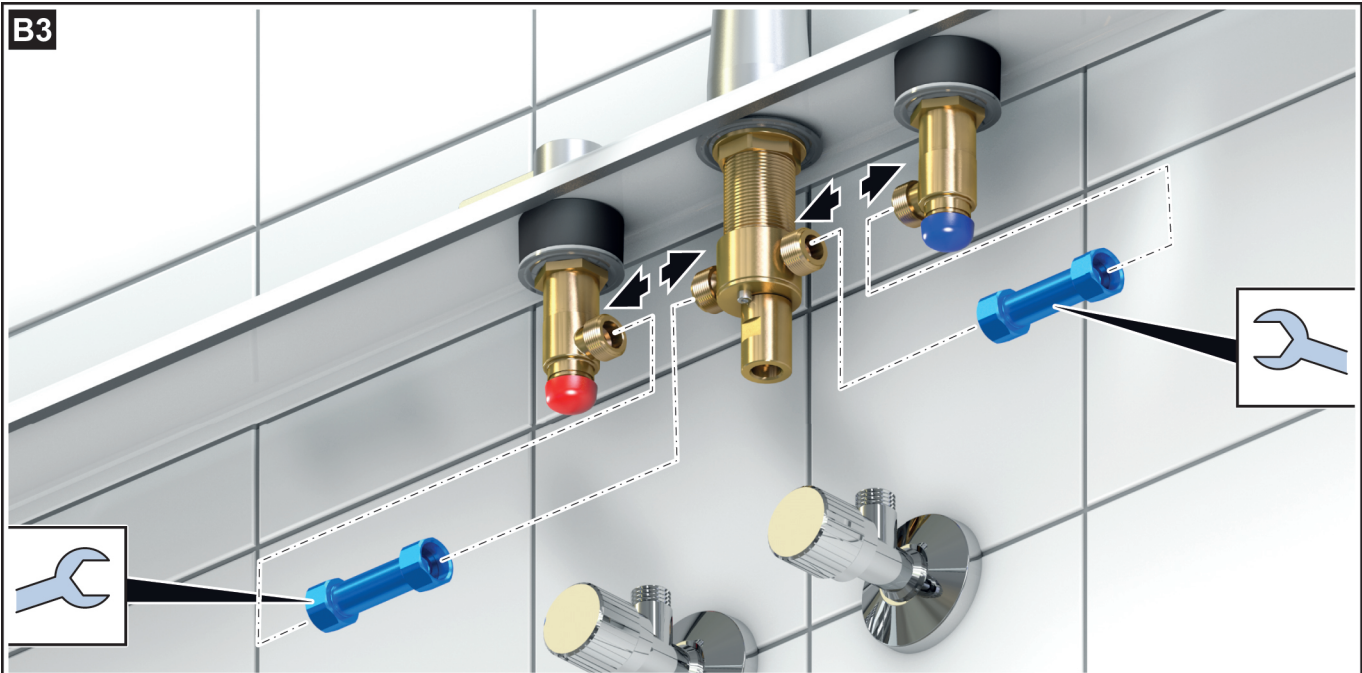


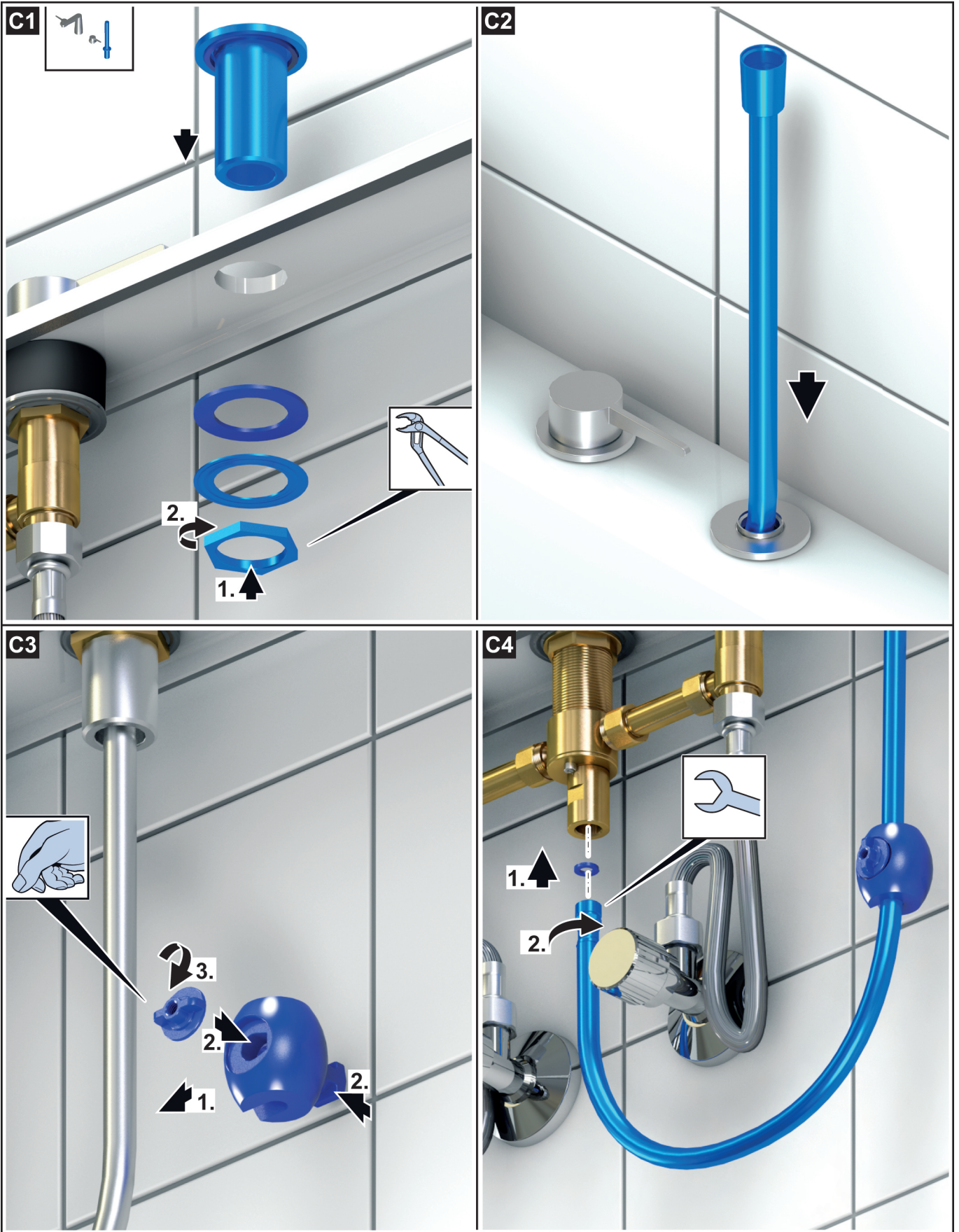




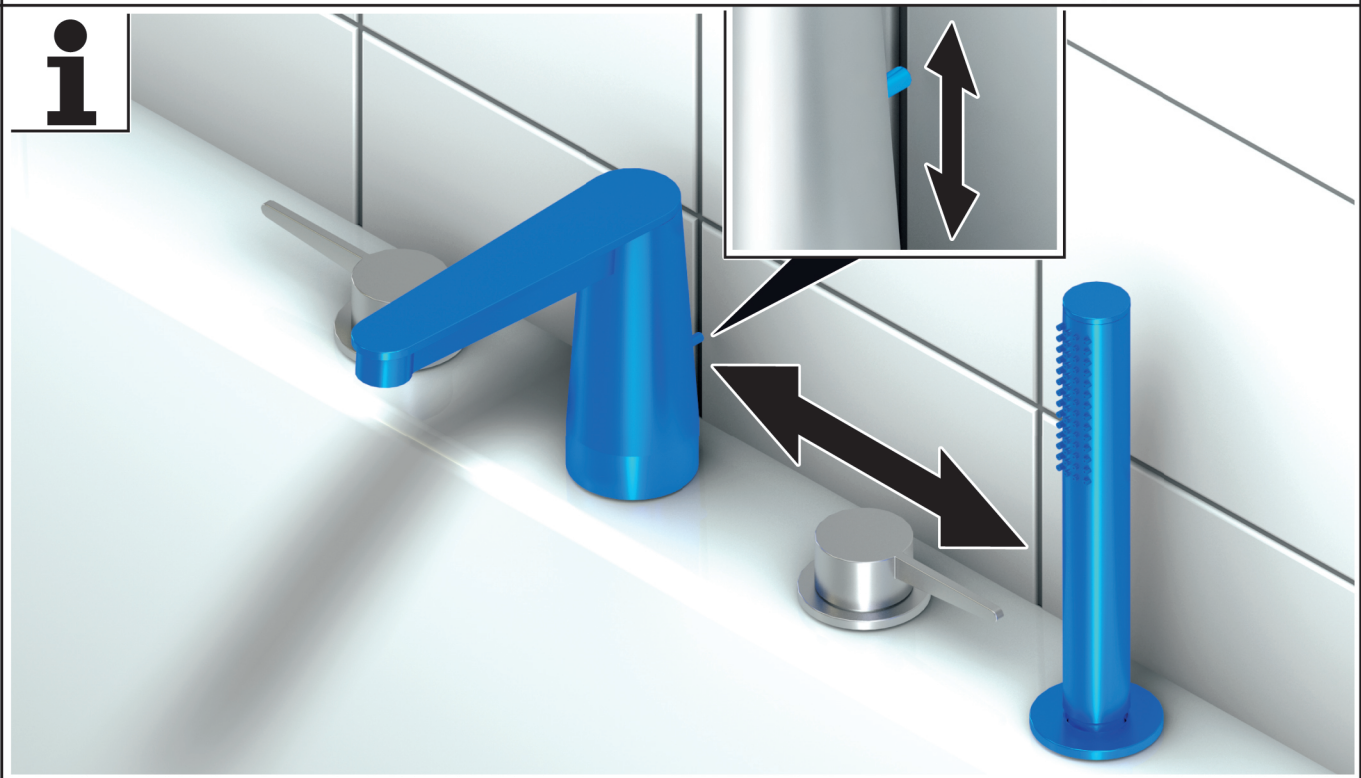
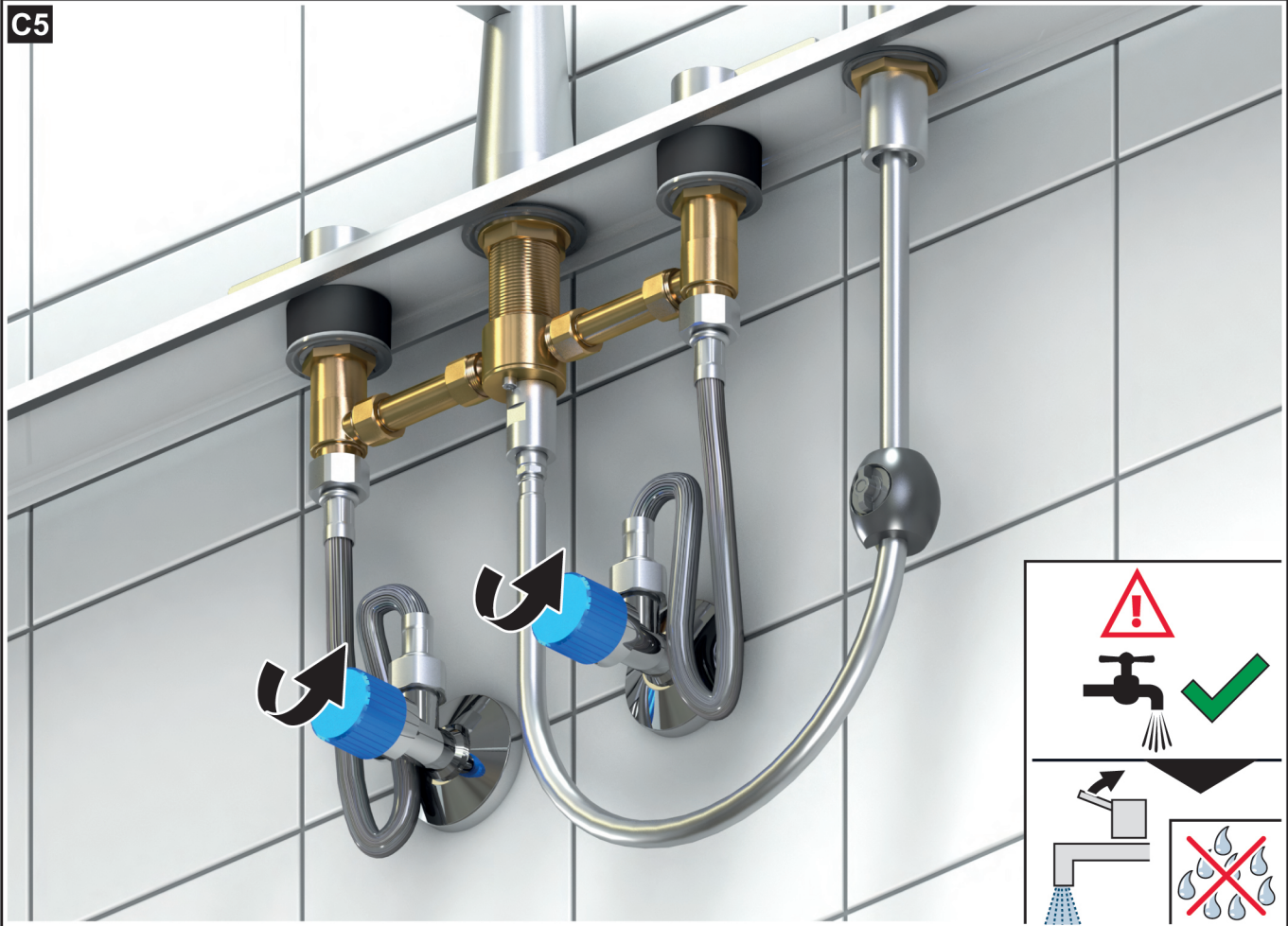


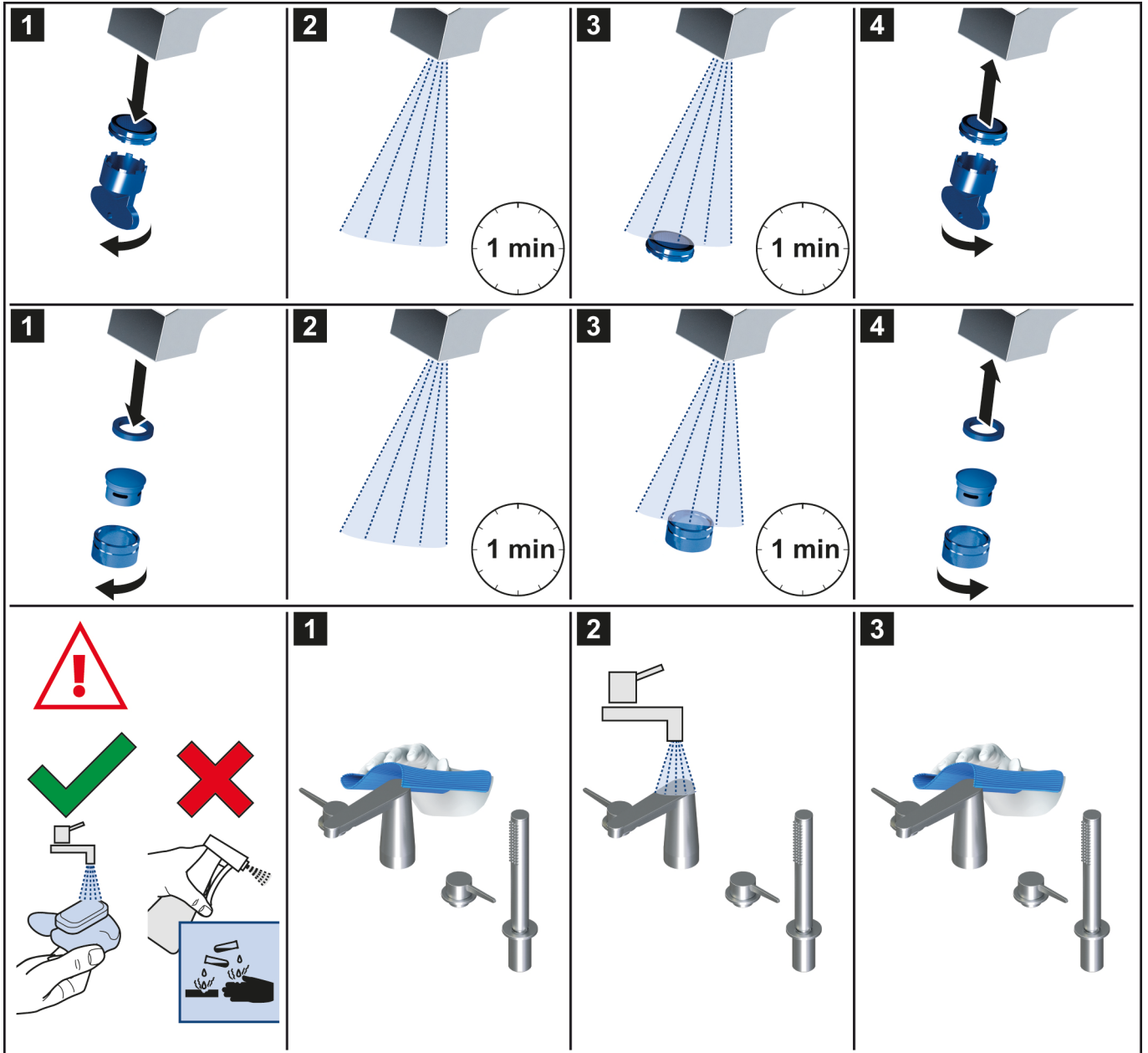






C5





VILLEROY & BOCH

GERMANY

*Villeroy & Boch AG
Bathroom and Wellness Division
Headquarters
66693 Mettlach
Germany*

Tel: +49 (0) 68 64 / 81 0

Fax: +49 (0) 68 64 / 81 1484