

Toilet seat Architectura Slim SC/QR



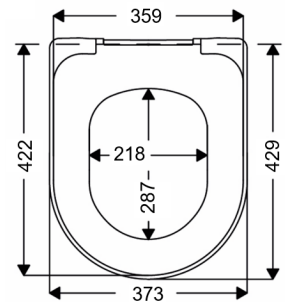
Modell

8M70S1 Architectura Slim toilet seat with Soft Closing and Quick Release, incl. 9224 17 61 hinge

Product Description

Architectura Slim toilet seat in Wrap Over design made of colour ingrained duroplast:

- incl. hinge with Quick Release in stainless steel
- centre distance: 155 mm
- load of ring seat: 240 kg
- 3 years guarantee



Colour Programme

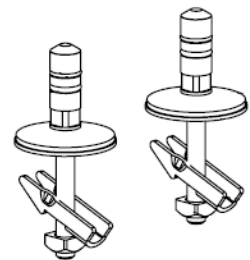
01 White

Hinge Finish

61 Stainless steel

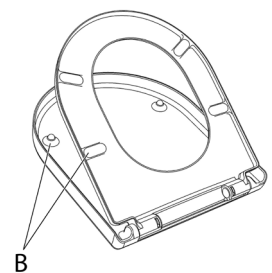
Spare Parts

- A) 9224 17 61 Hinge with Quick Release in stainless steel and nylon
 B) 9212 10 00 Buffer for seat and cover
 C) 9212 09 00 Soft Closing packet

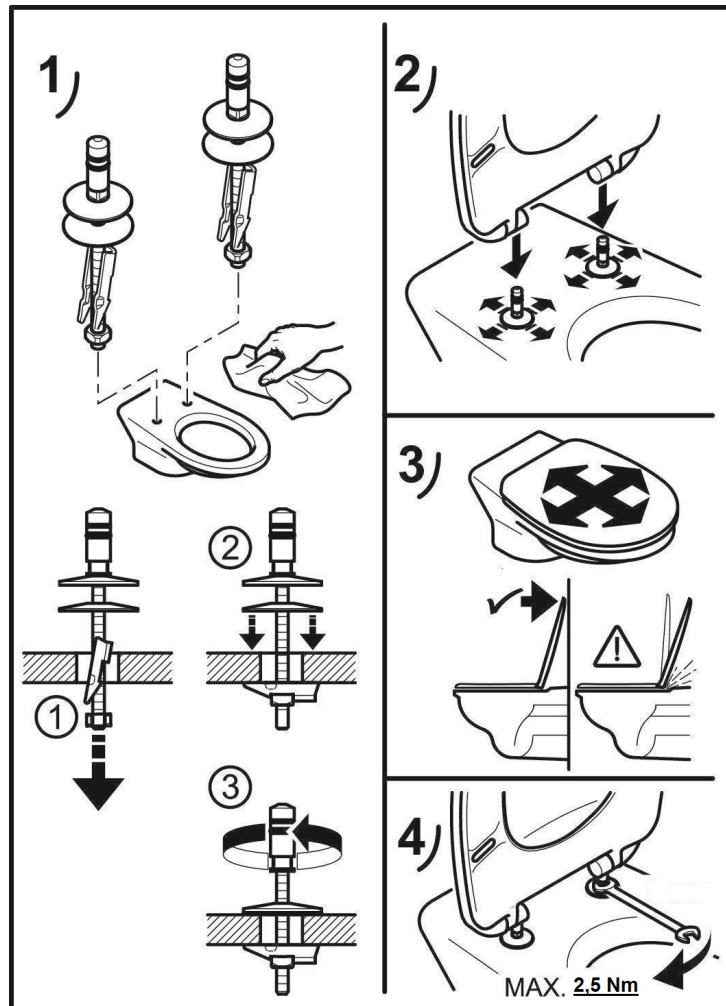


Cleaning Instructions

Use a mild soap solution. Seat and hinges should not be left damp, but be dried with a soft cloth. When using abrasive, corrosive or chlorine based cleaners for the bowl, avoid contact with seat and hinges as it may lead to damages or flash rust. Therefore, when cleaning the bowl, make sure that seat and cover are in an upright position until all the cleaner has been flushed away.



Installation Instructions



Material Descriptiong

TOILET SEAT: The material is colour ingrained duroplast (UF A 10 = urea formaldehyde) that contains no environmentally hazardous substances. The body consists of approx. 50% urea (NH_2CONH_2), approx. 25% cellulose and approx. 25% formaldehyde (HCHO), as well as small amounts of various fillers and additives.

BUFFERS: PE (Polyethylene)

DAMPER KIT: Hydraulic damper with stainless steel damper casing and plastic parts

DAMPER LIQUID: Anti-friction liquid

HINGES: Stainless steel and nylon

Guarantee

The guarantee includes faults or defects in the material of our products within a period of 3 years.

Products subject to minor technical modifications and design deviations E. & O.E.