

# OP Uno/Subway/OA toilet seat SC/QR



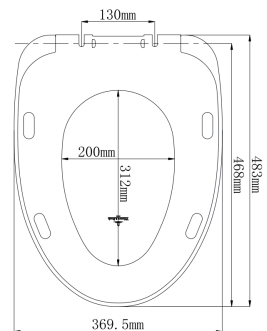
## Model

8M64S1 Toilet seat with Soft Closing and Quick Release, incl. 92098961 hinge

## Product Description

OP Uno/Subway/OA toilet seat in Wrap Over design made of colour ingrained duroplast

- incl. hinge with Quick Release in stainless steel
- centre distance: 140 mm
- load of ring seat: 240 kg
- 2 years guarantee



## Colour Programme

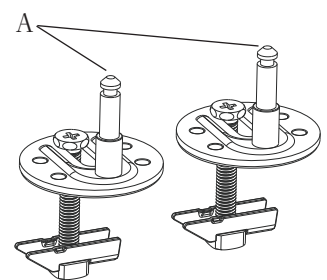
alpin white (01)

## Hinge Finish

61 Stainless steel

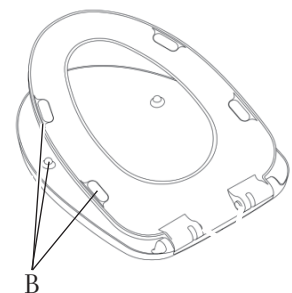
## Spare Parts

- A) 9209 89 61 Hinge with Quick Release  
B) 9209 90 00 Buffer for seat and cover

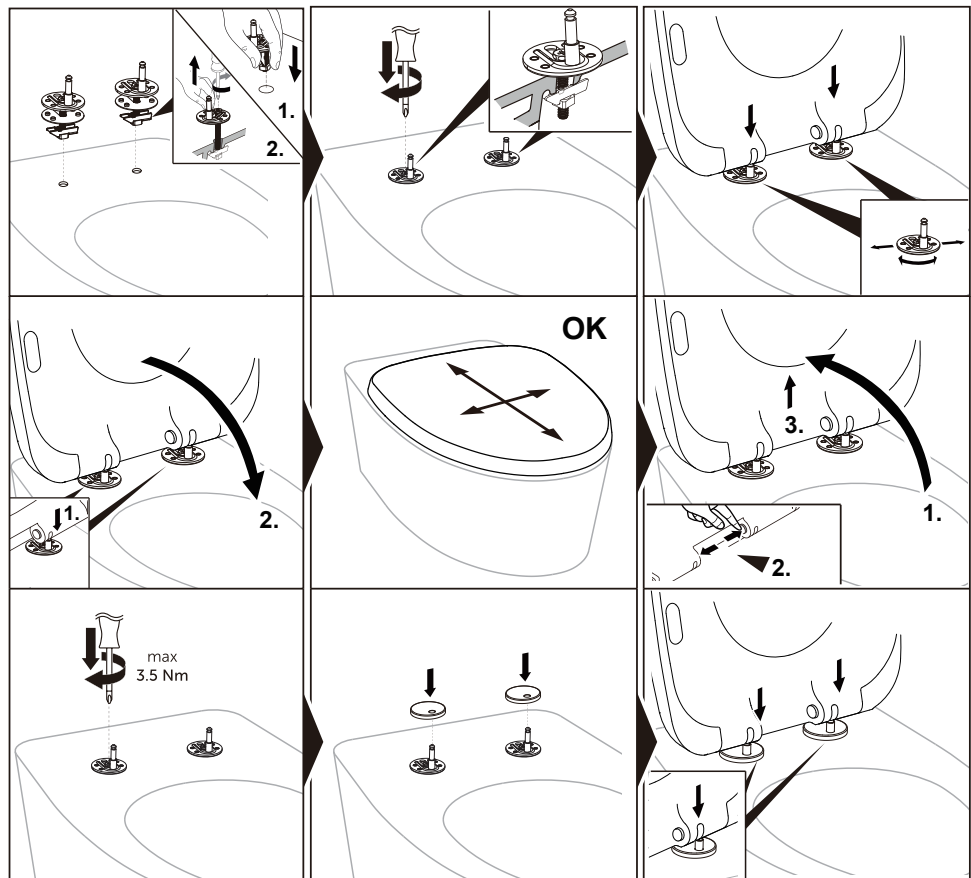


## Cleaning Instructions

Use a mild soap solution. Seat and hinges should not be left damp, but be dried with a soft cloth. When using abrasive, corrosive or chlorine based cleaners for the bowl, avoid contact with seat and hinges as it may lead to damages or flash rust. Therefore, when cleaning the bowl, make sure that seat and cover are in an upright position until all the cleaner has been flushed away



## Installation Instructions



## Material Description

**TOILET SEAT:** The material is colour ingrained duroplast (urea formaldehyde) that contains no environmentally hazardous substances. The body consists of approx. 65% urea formaldehyde Resin, approx. 30% a-fiber and approx. 5% auxiliary. The raw material from the supplier contains less than 0,03% formaldehyde after a special curing process.

**BUFFERS:** LDPE and EVA

**DAMPER KIT:** Hydraulic damper with stainless steel damper casing and plastic parts

**DAMPER LIQUID:** Anti-friction liquid

**HINGES:** Stainless steel

## Guarantee

The guarantee includes faults or defects in the material of our products within a period of 2 years. Products subject to minor technical modifications and design deviations E. & O.E.