



Quality of life since 1825

# Shower mixer Nautic – thermostat, 40 c-c

With pipe connection downwards

## Product features

SAFE TOUCH



- Safe Touch reduces the heat on the front of the mixer
- Maintains even water temperature upon pressure and temperature changes
- Can be expanded with bathtub spout

## Article numbers

Art-no.  
GB41205404

EAN  
7393792226318

## Packaging information

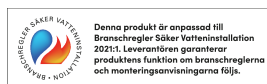
Length: 225 mm | Width: 205 mm | Height: 70 mm  
Weight: 1.92 kg  
Weight: 1 pc

## Assembling & Care

Prior to installation the lines must be flushed up to the faucet. The faucet is connected with the cold water line on the right and the hot water line on the left. Water pressure: max 1000 kPa, min 50kPa. Hot water temperature: max 80°C, min 45°C. Please note that we are not liable for damage resulting from improper installation.

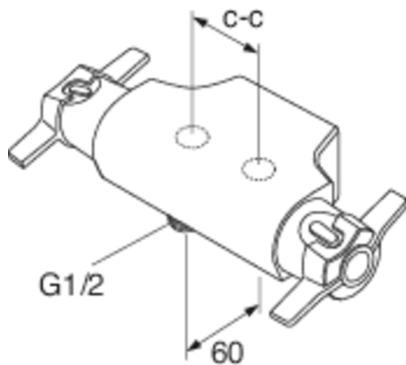
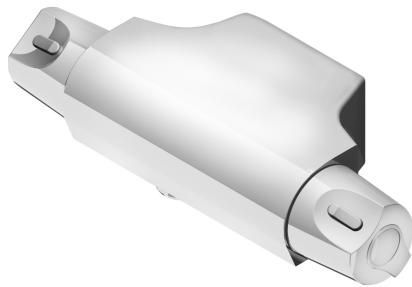
## Energy labeling and certifications

- Complies with Safe Water installation requirements.



## Technical information

- Max. tap capacity (at 300 kPa): 0,46 l/s
- Pressure loss with flow (0,2 l/s) 57 kPa
- Standard connection dimension: 40 c-c

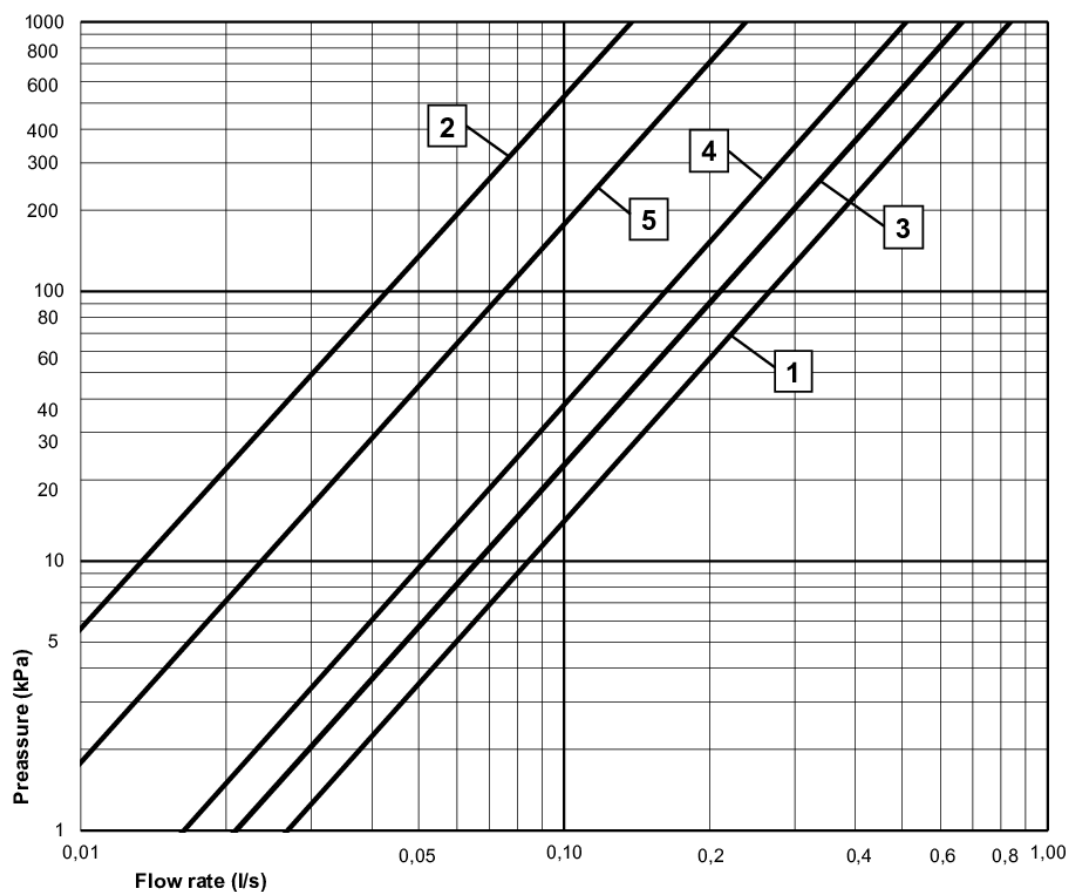


# GUSTAVSBERG/

## FLOW CHART/

### NAUTIC THERMOSTATIC BATHTUB AND SHOWER MIXER

GUSTAVSBERG /  
SMARTER BATHROOMS



- 1** Max flow (bath- and shower outlet)
- 2** Comfort flow
- 3** Bathtub outlet GB41636820, GB41638760
- 4** Bathtub outlet GB41636819, GB41638759
- 5** Shower set GB41103250

Valid for curve **1**

- Flowrate at 300 kPa:	0,46 l/s
- Pressure at flow 0,1 l/s:	14 kPa
- Pressure at flow 0,2 l/s:	57 kPa
- Pressure at flow 0,33 l/s:	154 kPa



Villeroy & Boch Gustavsberg AB / Box 400, 134 29 Gustavsberg / Phone +46 (0)8-570 391 00 / [www.gustavsberg.com](http://www.gustavsberg.com) / [info@gustavsberg.com](mailto:info@gustavsberg.com)