



Quality of life since 1825

Fixture Triomont XS - for toilet with wall control panel

Dual flush 4,5 or 3L and single flush 4,5L

Product features

- Flushing can be set to 4/2 l
- Large range of flush buttons in different materials and colours
- Suitable for installation on a straight wall or in a corner

Article numbers

Art-no.
GB1921102026

EAN
8711778215757

Packaging information

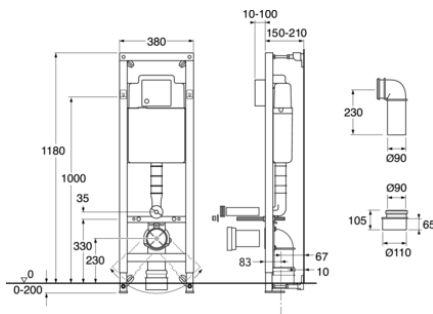
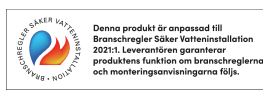
Length: 1160 mm | Width: 400 mm | Height: 150 mm
Weight: 13.8 kg
Weight: 1 pc

Assembling & Care

Mounted per included installation instructions. The height dimensions (1000 mm) of the drawing mean a seat height of 410-430 mm depending on the toilet model. Can when installed be adjusted up to 610-630 mm. Flexible bolt spacing for wall-mounted toilet installation, c-c 180 or 230 mm. With bolt spacing 180 c-c, all toilets from Gustavsberg and Villeroy & Boch fit.

Energy labeling and certifications

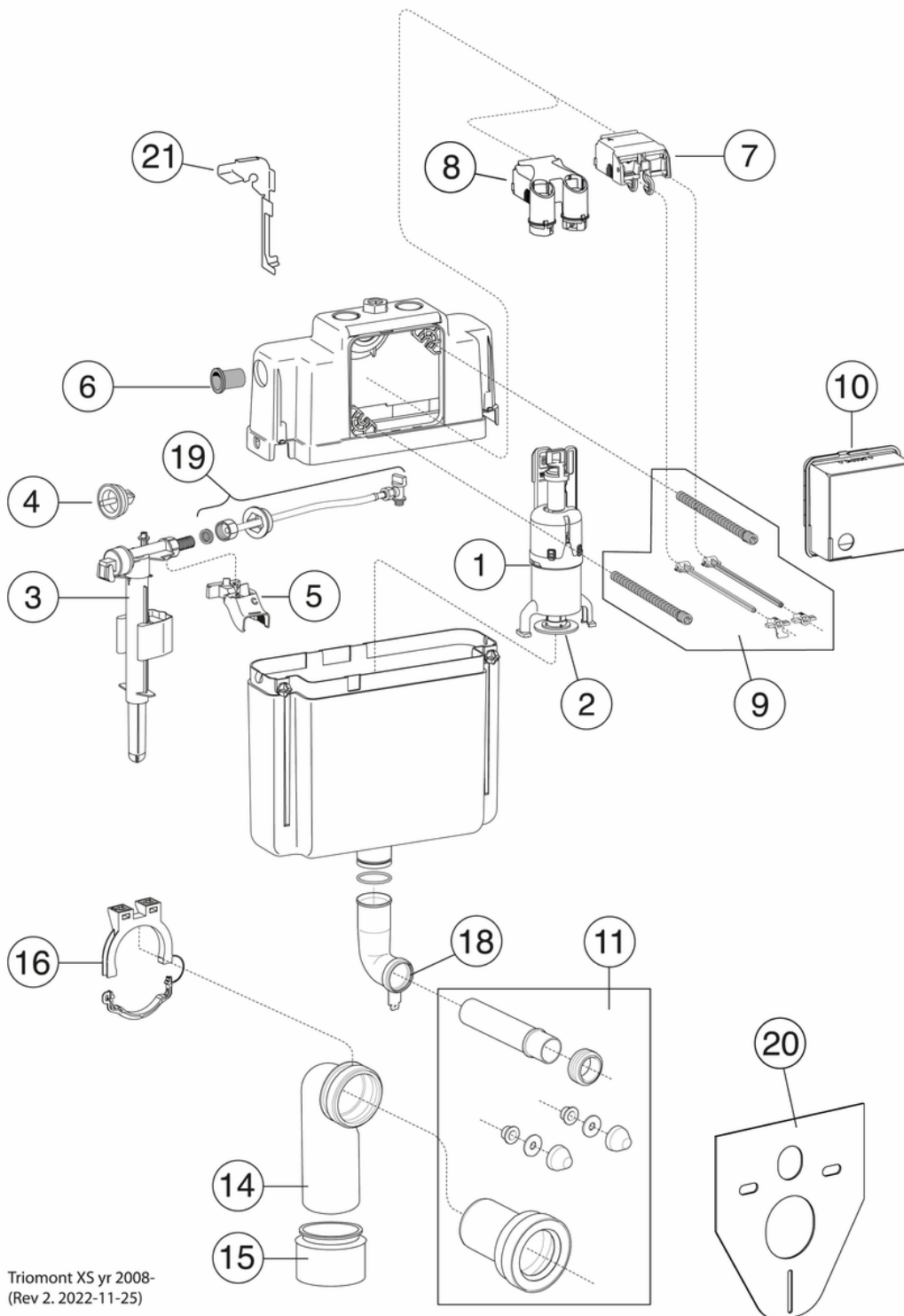
- SINTEF-certified Fixture in accordance with the standard SS 820200 Tank in accordance with EN 14055 Ready for AMA installation without any extra components (SE)



Technical information

- Flushing - water quantity: 4,5/3

Spare parts



Triomont XS yr 2008-
(Rev 2. 2022-11-25)

| No. | Product | Art-no. |
|-----|---|--------------|
| 1a | Bottom valve | GB1921100370 |
| 1b | Bottom valve | GB1921100399 |
| 2 | Gasket | GB1921100371 |
| 3 | Inlet valve | GB1921100600 |
| 4a | Membrane | GB1921100373 |
| 4b | Membrane | GB1921100601 |
| 5 | Fixing | GB1921100375 |
| 6 | Sleeve for incoming water | GB1921100392 |
| 7a | Mechanical lifting device | GB1921100377 |
| 7b | Sensor lifting piece Triomont | GB1921100604 |
| 8 | Pneumatic lifting device | GB1921100394 |
| 9a | Set of mounting/control pins, single flush, concealed cistern | GB1921100378 |
| 9b | Set of mounting/control pins, dual flush, concealed cistern | GB1921100379 |
| 10 | Masonry aid | GB1921100387 |
| 11 | WC connection set | GB1921100380 |
| 13 | Flush pipe | GB1921100111 |
| 14 | Drain bend | GB1921100382 |
| 15 | Eccentric | GB1921100383 |
| 17 | Flush pipe with fixing | GB1921100385 |
| 18 | Sealing ring | GB1921100386 |
| 19 | Flexible connecting hose set, XS | GB1921100369 |
| 20 | Insulation protection | GB1921100388 |
| 21 | Repair kit | GB1921100389 |