



Quality of life since 1825

# Dušikomplekt Atlantic 2.1 – termostaat

Sh dušilift, pliivaba, energiaklass A, 160 c-c

## Toote Omadused

SMART INSIDE



SAFE TOUCH



PLIIVABA



- Complete with energy class A shower set
- Maintains even water temperature during pressure and temperature changes
- Contains less than 0.1% lead

## Article number

Art.nr.  
GB412013870

EAN  
7391530076416

## Pakendiinfo

Pikkus: 775 mm | Laius: 145 mm | Kõrgus: 80 mm  
Kaal: 2.96 kg  
Number pakendis: 1 pc

## Paigaldus ja hooldus

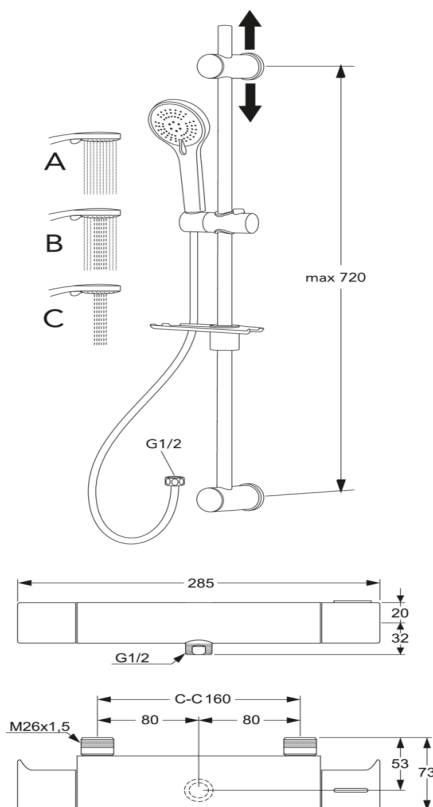
Enne paigaldamist tuleb torude loputamiseks lasta veel joosta. Segisti on ühendatud paremalt külma veetoruga ja vasakult kuumaveetoruga. Veedurve: max 1000 kPa, min 50 kPa. Kuuma vee temperatuur: max 80 °C, min 45 °C. Me ei vastuta valest paigaldusest tuleneva kahju eest.

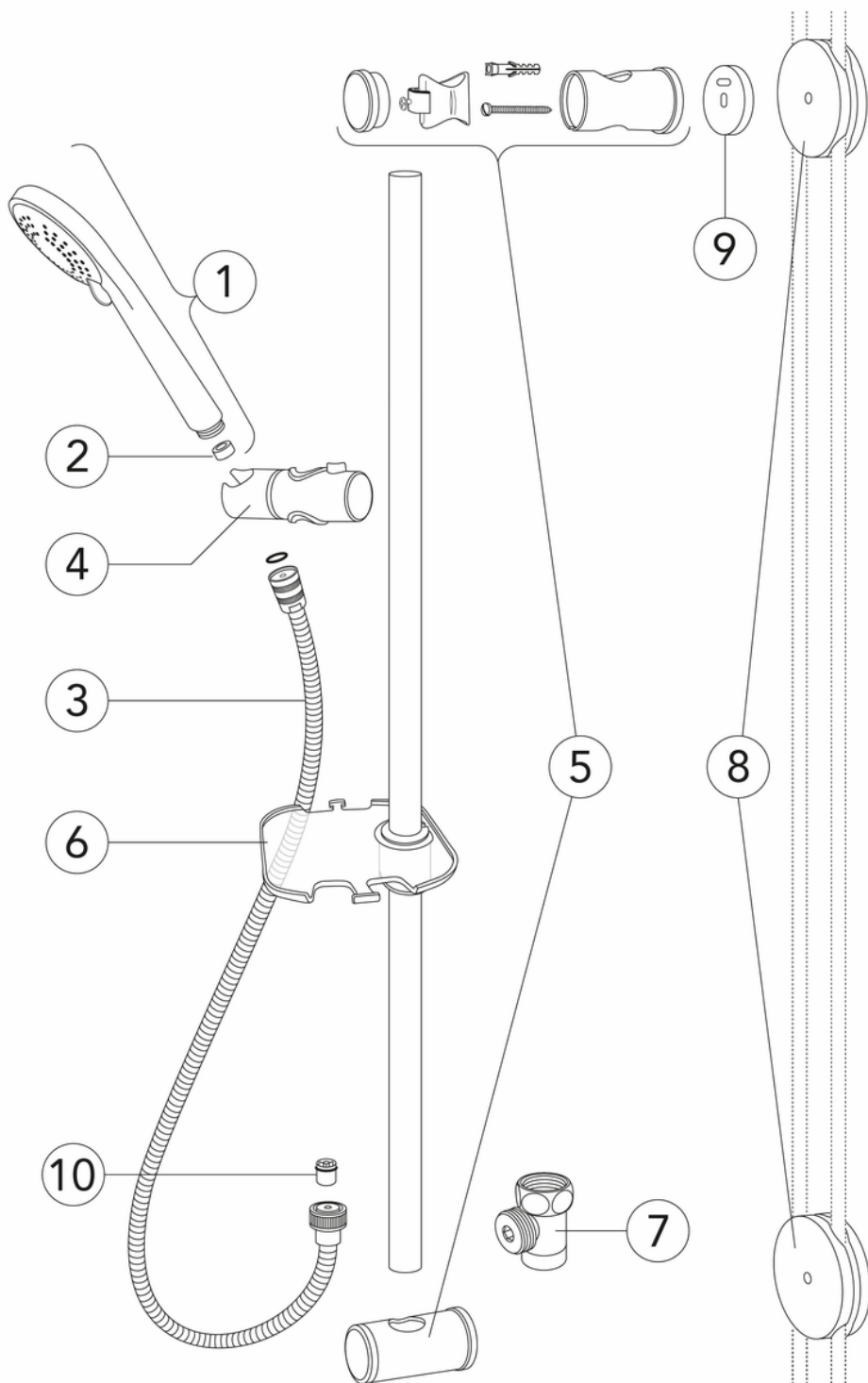
## Energiamärgistus ja vastavustunnistused



## Tehniline info

- Max. tap capacity (at 300 kPa): 0,1l/s
- Pressure loss with flow (0,1l/s) 300 kPa
- CO2e jalajälg: 15,7 kg
- Ühenduse mõõdud: 160 c-c





ExplodedView GB41106250\_Shower\_set\_2.1 (Rev 1. 2023-04-05)

Nr.	Toote	Art.nr.
1	Käsidušš 2.1/2.2	GB4165036401
2	Vooluhulga reguleerija	GB4165036501
3	Voolik dušikomplektile, 1,75 m	GB41636266 00
4		GB41638726 01
5		GB41638727 02
6		GB41638728 01
7	Põhjaklapp Care	GB41638960 01
8		GB41637850 02
9	Seinakauguse dušilift	GB4165037201
10		GB41634719 01

# GUSTAVSBERG/

## FLOW CHART/ Thermostatic Mixers



- 1. Max flow (bath- and shower outlet)
- 2. Bathtub outlet: Spouts GB41650247, GB41650320
- 3. Shower set GB41106250
- 4. Spout GB41650279 (85 mm)

1. Max flow (bath- and shower outlet)		2. Bathtub outlet: Spouts GB41650247, GB41650320	
- Flow rate at 300 kPa:	0,425 l/s	- Flow rate at 300 kPa:	0,322 l/s
- Pressure at flow 0,1 l/s:	17 kPa	- Pressure at flow 0,1 l/s:	29 kPa
- Pressure at flow 0,2 l/s:	66 kPa	- Pressure at flow 0,2 l/s:	116 kPa
- Pressure at flow 0,33 l/s:	181 kPa	- Pressure at flow 0,33 l/s:	316 kPa

3. Shower set GB41106250		4. Spout GB41650279 (85 mm)	
- Flow rate at 300 kPa:	0,1 l/s	- Flow rate at 300 kPa:	0,265 l/s
- Pressure at flow 0,1 l/s:	300 kPa	- Pressure at flow 0,1 l/s:	43 kPa
- Pressure at flow 0,2 l/s:	N/A	- Pressure at flow 0,2 l/s:	171 kPa
- Pressure at flow 0,33 l/s:	N/A	- Pressure at flow 0,33 l/s:	465 kPa

Rev, 1, 2022-12-28 Gustavsberg Labb

Villeroy & Boch Gustavsberg AB / Box 400, 134 29 Gustavsberg / Phone +46 (0)8-570 391 00 / [www.gustavsberg.com](http://www.gustavsberg.com) / [info@gustavsberg.com](mailto:info@gustavsberg.com)