



Quality of life since 1825

Shower column New Nautic 2.2, 40 c-c

Lead-free, connection can be shifted

Product features

SMART INSIDE



SAFE TOUCH



LEAD-FREE



- Safe Touch reduces the heat on the front of the faucet
- Maintains even water temperature upon pressure and temperature changes
- Can be expanded with bathtub spout

Article numbers

Art-no.
GB412024300

EAN
7391530076355

Packaging information

Length: 780 mm | Width: 226 mm | Height: 90 mm
Weight: 4.72 kg
Weight: 1 pc

Assembling & Care

Prior to installation the lines must be flushed up to the faucet. The faucet is connected with the cold water line on the right and the hot water line on the left. Water pressure: max 1000 kPa, min 50kPa. Hot water temperature: max 80°C, min 45°C. Please note that we are not liable for damage resulting from improper installation.

Energy labeling and certifications

- Complies with Safe Water installation requirements.

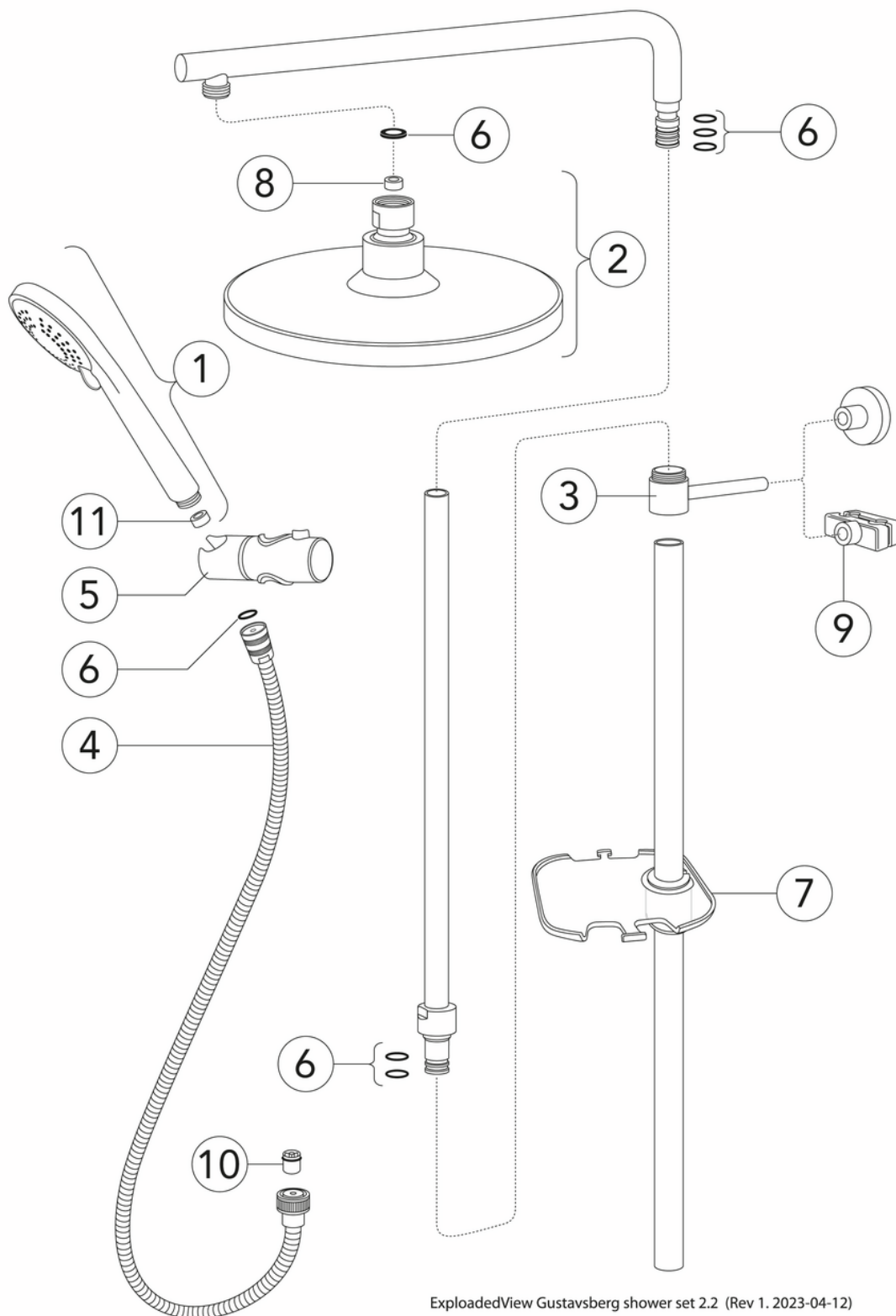


Technical information

- Max. tap capacity (at 300 kPa): 0,117 l/s
- Pressure loss with flow (0,1 l/s) 220 kPa
- CO2 Footprint: 38.47 kg

- Standard connection dimension: 40 c-c

Spare parts



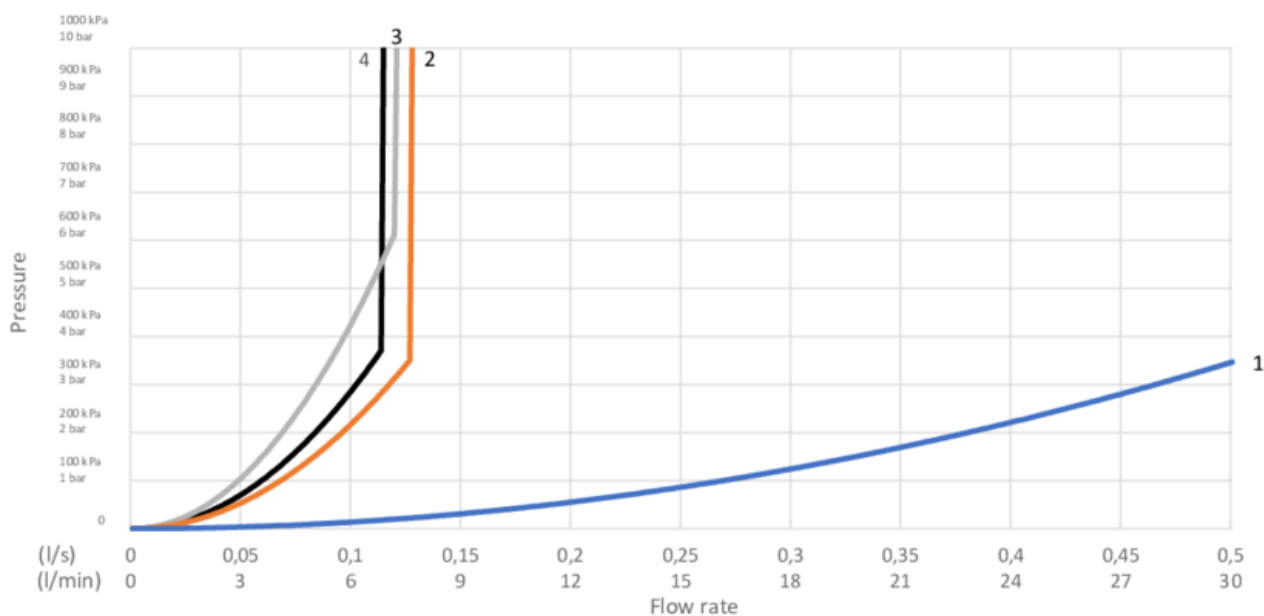
ExplodedView Gustavsberg shower set 2.2 (Rev 1. 2023-04-12)

No.	Product	Art-no.
1	Shower handle 2.1/2.2	GB4165036401
2	Showerhead 2.2	GB4165036601
3	Wall Bracket 2.2	GB4165036701
4	Shower hose Original	GB41636266 00
5	Slider 22 mm	GB41639445
6	Sealing kit 2.2	GB4165036901
7	Soap Dish 2.2	GB4165037001
8	Flow Regulator	GB4165037101
9	Pipe Bracket Head shower	GB4165036801
10	Check valve dw 14	GB41634719 01
11	Flow regulator	GB4165036501

GUSTAVSBERG/

FLOW CHART/

New Nautic Energy Shower Set



- 1. Max flow (bath- and shower outlet)
- 2. Head shower max flow
- 3. Head shower eco flow
- 4. Hand shower

1. Max flow (bath- and shower outlet)		2. Head shower max flow	
- Flow rate at 300 kPa:	0,465 l/s	- Flow rate at 300 kPa:	0,117 l/s
- Pressure at flow 0,1 l/s:	14 kPa	- Pressure at flow 0,1 l/s:	220 kPa
- Pressure at flow 0,2 l/s:	56 kPa	- Pressure at flow 0,2 l/s:	N/A
- Pressure at flow 0,33 l/s:	151 kPa	- Pressure at flow 0,33 l/s:	N/A

3. Head shower eco flow		4. Hand shower	
- Flow rate at 300 kPa:	0,083 l/s	- Flow rate at 300 kPa:	0,102 l/s
- Pressure at flow 0,1 l/s:	432 kPa	- Pressure at flow 0,1 l/s:	290 kPa
- Pressure at flow 0,2 l/s:	N/A	- Pressure at flow 0,2 l/s:	N/A
- Pressure at flow 0,33 l/s:	N/A	- Pressure at flow 0,33 l/s:	N/A

Rev, 1, 2022-12-22 Gustavsberg Labb

Villeroy & Boch Gustavsberg AB / Box 400, 134 29 Gustavsberg / Phone +46 (0)8-570 391 00 / www.gustavsberg.com / info@gustavsberg.com