



Quality of life since 1825

# Suihkupaketti Atlantic 2.1 – termostaatti

Sis. suihkusetin, lyijytön, energialuokka A, 150 c-c

## Tuotteen ominaisuudet

SMART INSIDE

SAFE TOUCH

LYIJYTTÖMÄT  
HANAT



- Sisältää energialuokan A suihkusetin
- Pitää veden lämpötilan tasaisena paineen ja lämpötilan muuttuessa
- Sisältää alle 0,1 % lyijyä

## Artikkelien numero

LVI-nr.  
6371610

Art.nr.  
GB412113870

EAN  
7391530076461

## Pakkaustiedot

Pituus: 775 mm | Leveys: 145 mm | Korkeus: 80 mm

Paino: 3 kg

Pakkauksen numero: 1 pc

## Kokoaminen & hoito

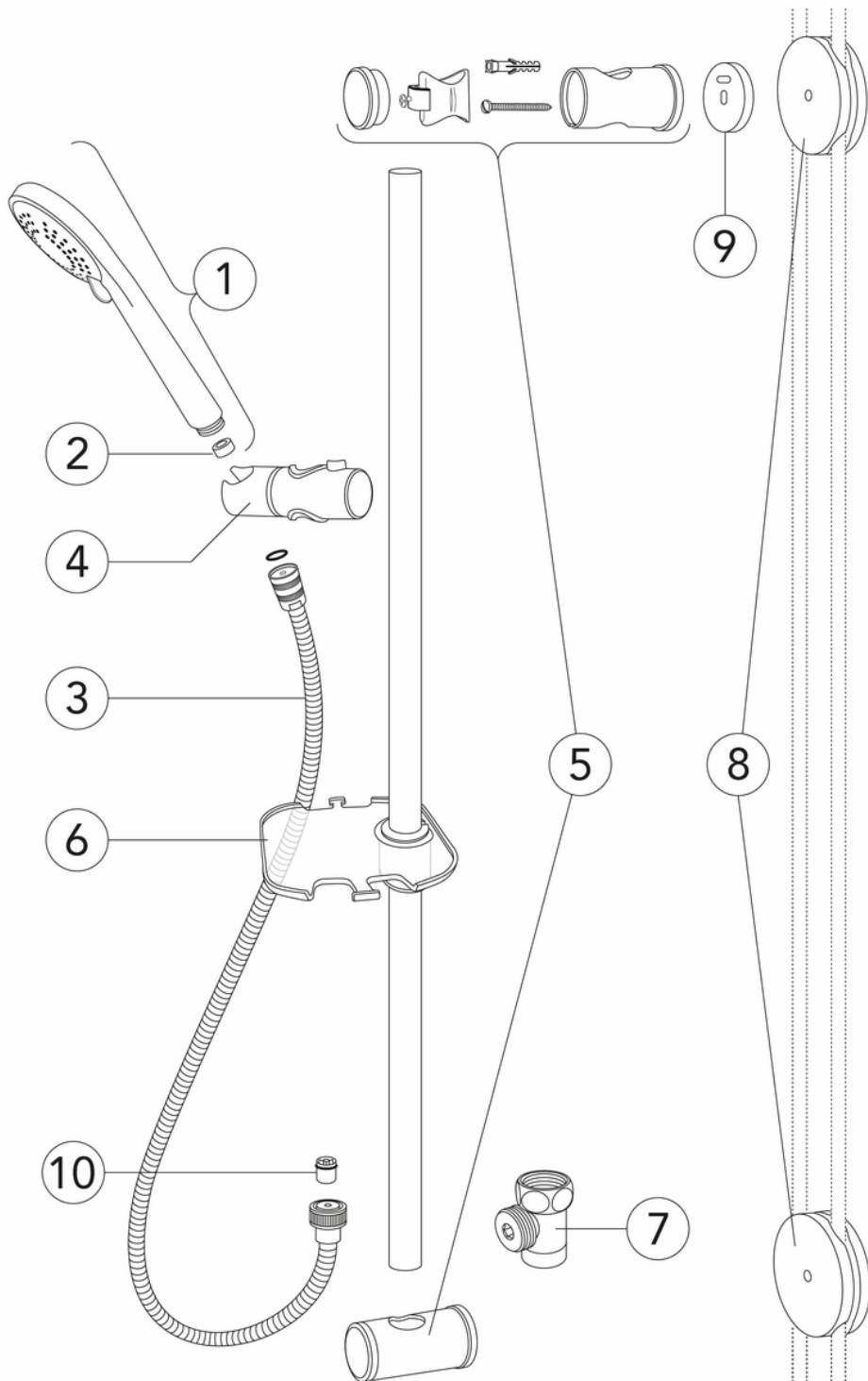
Putket on huuhdottava ennen asennusta. Hana kytketään oikealta kylmävesijohtoon ja vasemmalta kuumavesijohtoon. Vedenpaine: enintään 1000 kPa, vähintään 50 kPa. Kuuman veden lämpötila: enintään 80 °C, vähintään 45 °C. Huomaathan, että emme vastaa vahingoista, jotka johtuvat virheellisestä asennuksesta.

## Energiamerkintä ja -sertifiointi



## Tekniset tiedot

- Max. tap capacity (at 300 kPa): 0,1l/s
- Pressure loss with flow (0,1l/s) 300 kPa
- Tuotteen CO2e jalanjälki: 15,7 kg
- Liitäntäkoko: 150 c-c



ExplodedView GB41106250\_Shower\_set\_2.1 (Rev 1. 2023-04-05)

| Nr. | Tuote                                  | LVI-nr. | Art.nr.       |
|-----|--|---------|---------------|
| 1   | Suihkun kahva 2.1/2.2                  | 6570355 | GB4165036401  |
| 2   | Virtaussäädin                          |         | GB4165036501  |
| 3   | Letku, interlock, 1,75 m, suihkusetiin | 6575060 | GB41636266 00 |
| 4   |  | 6570273 | GB41638726 01 |
| 5   |  | 6570274 | GB41638727 02 |
| 6   |  | 6570275 | GB41638728 01 |
| 7   | Tyhjennysventtiili Care                |         | GB41638960 01 |
| 8   |  |         | GB41637850 02 |
| 9   | Seinäsuihkun välikesarja               |         | GB4165037201  |
| 10  |  |         | GB41634719 01 |

# GUSTAVSBERG/

## FLOW CHART/ Thermostatic Mixers



- 1. Max flow (bath- and shower outlet)
- 2. Bathtub outlet: Spouts GB41650247, GB41650320
- 3. Shower set GB41106250
- 4. Spout GB41650279 (85 mm)

| <p><b>1. Max flow (bath- and shower outlet)</b></p> <table border="1" style="width: 100%; border-collapse: collapse;"> <tr> <td style="width: 30%;">- Flow rate at 300 kPa:</td> <td>0,425 l/s</td> </tr> <tr> <td>- Pressure at flow 0,1 l/s:</td> <td>17 kPa</td> </tr> <tr> <td>- Pressure at flow 0,2 l/s:</td> <td>66 kPa</td> </tr> <tr> <td>- Pressure at flow 0,33 l/s:</td> <td>181 kPa</td> </tr> </table> | - Flow rate at 300 kPa: | 0,425 l/s | - Pressure at flow 0,1 l/s: | 17 kPa  | - Pressure at flow 0,2 l/s: | 66 kPa | - Pressure at flow 0,33 l/s: | 181 kPa | <p><b>2. Bathtub outlet: Spouts GB41650247, GB41650320</b></p> <table border="1" style="width: 100%; border-collapse: collapse;"> <tr> <td style="width: 30%;">- Flow rate at 300 kPa:</td> <td>0,322 l/s</td> </tr> <tr> <td>- Pressure at flow 0,1 l/s:</td> <td>29 kPa</td> </tr> <tr> <td>- Pressure at flow 0,2 l/s:</td> <td>116 kPa</td> </tr> <tr> <td>- Pressure at flow 0,33 l/s:</td> <td>316 kPa</td> </tr> </table> | - Flow rate at 300 kPa: | 0,322 l/s | - Pressure at flow 0,1 l/s: | 29 kPa | - Pressure at flow 0,2 l/s: | 116 kPa | - Pressure at flow 0,33 l/s: | 316 kPa |
|--|-------------------------|-----------|-----------------------------|---------|-----------------------------|--------|------------------------------|---------|--|-------------------------|-----------|-----------------------------|--------|-----------------------------|---------|------------------------------|---------|
| - Flow rate at 300 kPa:  | 0,425 l/s               |           |                             |         |                             |        |                              |         |  |                         |           |                             |        |                             |         |                              |         |
| - Pressure at flow 0,1 l/s:  | 17 kPa                  |           |                             |         |                             |        |                              |         |  |                         |           |                             |        |                             |         |                              |         |
| - Pressure at flow 0,2 l/s:  | 66 kPa                  |           |                             |         |                             |        |                              |         |  |                         |           |                             |        |                             |         |                              |         |
| - Pressure at flow 0,33 l/s:   | 181 kPa                 |           |                             |         |                             |        |                              |         |  |                         |           |                             |        |                             |         |                              |         |
| - Flow rate at 300 kPa:  | 0,322 l/s               |           |                             |         |                             |        |                              |         |  |                         |           |                             |        |                             |         |                              |         |
| - Pressure at flow 0,1 l/s:  | 29 kPa                  |           |                             |         |                             |        |                              |         |  |                         |           |                             |        |                             |         |                              |         |
| - Pressure at flow 0,2 l/s:  | 116 kPa                 |           |                             |         |                             |        |                              |         |  |                         |           |                             |        |                             |         |                              |         |
| - Pressure at flow 0,33 l/s:   | 316 kPa                 |           |                             |         |                             |        |                              |         |  |                         |           |                             |        |                             |         |                              |         |
| <p><b>3. Shower set GB41106250</b></p> <table border="1" style="width: 100%; border-collapse: collapse;"> <tr> <td style="width: 30%;">- Flow rate at 300 kPa:</td> <td>0,1 l/s</td> </tr> <tr> <td>- Pressure at flow 0,1 l/s:</td> <td>300 kPa</td> </tr> <tr> <td>- Pressure at flow 0,2 l/s:</td> <td>N/A</td> </tr> <tr> <td>- Pressure at flow 0,33 l/s:</td> <td>N/A</td> </tr> </table>                      | - Flow rate at 300 kPa: | 0,1 l/s   | - Pressure at flow 0,1 l/s: | 300 kPa | - Pressure at flow 0,2 l/s: | N/A    | - Pressure at flow 0,33 l/s: | N/A     | <p><b>4. Spout GB41650279 (85 mm)</b></p> <table border="1" style="width: 100%; border-collapse: collapse;"> <tr> <td style="width: 30%;">- Flow rate at 300 kPa:</td> <td>0,265 l/s</td> </tr> <tr> <td>- Pressure at flow 0,1 l/s:</td> <td>43 kPa</td> </tr> <tr> <td>- Pressure at flow 0,2 l/s:</td> <td>171 kPa</td> </tr> <tr> <td>- Pressure at flow 0,33 l/s:</td> <td>465 kPa</td> </tr> </table>                      | - Flow rate at 300 kPa: | 0,265 l/s | - Pressure at flow 0,1 l/s: | 43 kPa | - Pressure at flow 0,2 l/s: | 171 kPa | - Pressure at flow 0,33 l/s: | 465 kPa |
| - Flow rate at 300 kPa:  | 0,1 l/s                 |           |                             |         |                             |        |                              |         |  |                         |           |                             |        |                             |         |                              |         |
| - Pressure at flow 0,1 l/s:  | 300 kPa                 |           |                             |         |                             |        |                              |         |  |                         |           |                             |        |                             |         |                              |         |
| - Pressure at flow 0,2 l/s:  | N/A                     |           |                             |         |                             |        |                              |         |  |                         |           |                             |        |                             |         |                              |         |
| - Pressure at flow 0,33 l/s:   | N/A                     |           |                             |         |                             |        |                              |         |  |                         |           |                             |        |                             |         |                              |         |
| - Flow rate at 300 kPa:  | 0,265 l/s               |           |                             |         |                             |        |                              |         |  |                         |           |                             |        |                             |         |                              |         |
| - Pressure at flow 0,1 l/s:  | 43 kPa                  |           |                             |         |                             |        |                              |         |  |                         |           |                             |        |                             |         |                              |         |
| - Pressure at flow 0,2 l/s:  | 171 kPa                 |           |                             |         |                             |        |                              |         |  |                         |           |                             |        |                             |         |                              |         |
| - Pressure at flow 0,33 l/s:   | 465 kPa                 |           |                             |         |                             |        |                              |         |  |                         |           |                             |        |                             |         |                              |         |

Rev, 1, 2022-12-28 Gustavsberg Labb

Villeroy & Boch Gustavsberg AB / Box 400, 134 29 Gustavsberg / Phone +46 (0)8-570 391 00 / [www.gustavsberg.com](http://www.gustavsberg.com) / [info@gustavsberg.com](mailto:info@gustavsberg.com)