



Quality of life since 1825

# Shower column Nordic Round

150 c-c

## Product features

SMART INSIDE SAFE TOUCH



- Safe Touch, minimizes the heat on the front of the mixer
- Maintains even water temperature during pressure and temperature changes
- Can be supplemented with reverse pipe

## Article numbers

Art-no.  
GB41211730

EAN  
7391530077048

## Packaging information

Length: 745 mm | Width: 368 mm | Height: 94 mm

Weight: 4.67 kg

Weight: 1 pc

## Assembling & Care

Prior to installation the lines must be flushed up to the faucet. The faucet is connected with the cold water line on the right and the hot water line on the left. Water pressure: max 1000 kPa, min 50kPa. Hot water temperature: max 80°C, min 45°C. Please note that we are not liable for damage resulting from improper installation.

## Energy labeling and certifications



CERTIFIERING  
KONTROLL



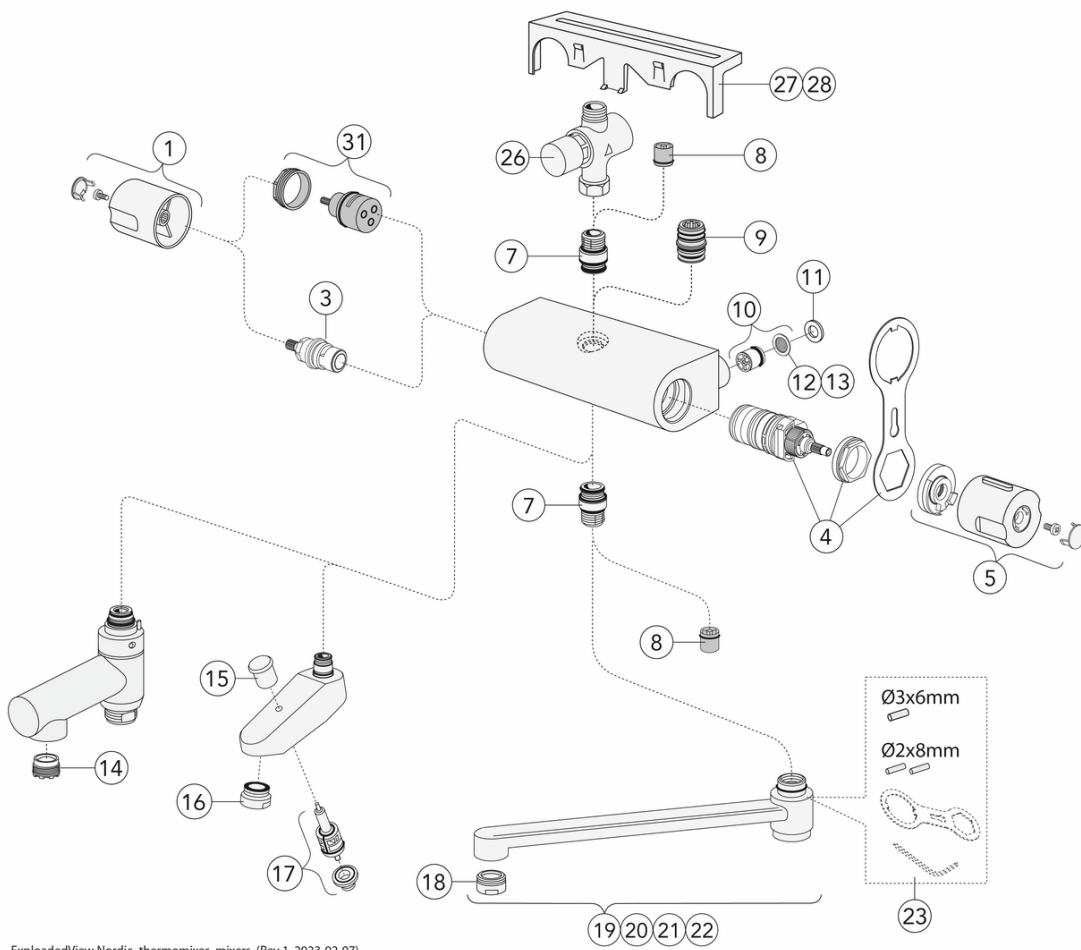
Denna produkt är anpassad till  
Branschregler Säker Vatteninstallation  
2021:1. Leverantören garanterar  
produktens funktion om branschreglerna  
och monteringsanvisningarna följs.



## Technical information

- Max. tap capacity (at 300 kPa): 0,425 l/s
- Pressure loss with flow (0,33 l/s) 181 kPa
- Standard connection dimension: 150 c-c

# Spare parts



ExplodedView Nordic\_thermomixer\_mixers (Rev 1. 2023-02-07)

| No. | Product                       | Art-no.       |
|-----|-------------------------------|---------------|
| 1   | Handle Nordic - quantity      | GB4165022901  |
| 3   | Headwork New Nautic           | GB41650292001 |
| 4   | Thermostat cartridge          | GB41638334 01 |
| 5   | Handle Nordic - temperature   | GB4165023101  |
| 7   | Nipple New Nautic             | GB4165020401  |
| 8   | Check valve dw 14             | GB41634719 01 |
| 9   | Nipple New Nautic             | GB4165020601  |
| 10  | Check valve with filter       | GB41632698 02 |
| 11  | Gasket New Nautic             | GB41650355    |
| 12  | Filter for non-return valve   | GB41635633 02 |
| 13  | Filter for non-return valve   | GB41635633 10 |
| 14  | Aerator                       | GB41638542 01 |
| 15  | Pull switch                   | GB41636822 01 |
| 16  | Aerator                       | GB41634555 01 |
| 17  | Pull diverter                 | GB41636577 01 |
| 18  | Aerator 24x1                  | GB41630131 01 |
| 19  | Swivel spout 85 mm            | GB41650279    |
| 20  | Swivel spout 150 mm           | GB41650282    |
| 21  | Swivel spout 250 mm           | GB41650285    |
| 22  | Swivel spout 350 mm           | GB41650288    |
| 23  | Details for swivel limitation | GB41633972    |
| 26  | Time Valve                    | GB41639716    |
| 27  | Shelf                         | GB41650052    |
| 28  | Shelf, Matt black             | GB4165005253  |
| 31  | Diverter New Nautic           | GB4165021301  |

# GUSTAVSBERG/

## FLOW CHART/

Thermostatic Mixers, Shower Columns, Spout 350 mm



- 1. Max flow (bath- and shower outlet)
- 2. Head shower GB41103230, GB41103235
- 3. Hand shower GB41103230, GB41103235
- 4. Spout GB41650288 (350 mm)

| 1. Max flow (bath- and shower outlet) |           | 2. Head shower GB41103230, GB41103235 |           |
|---------------------------------------|-----------|---------------------------------------|-----------|
| - Flow rate at 300 kPa:               | 0,465 l/s | - Flow rate at 300 kPa:               | 0,425 l/s |
| - Pressure at flow 0,1 l/s:           | 14 kPa    | - Pressure at flow 0,1 l/s:           | 17 kPa    |
| - Pressure at flow 0,2 l/s:           | 56 kPa    | - Pressure at flow 0,2 l/s:           | 66 kPa    |
| - Pressure at flow 0,33 l/s:          | 151 kPa   | - Pressure at flow 0,33 l/s:          | 181 kPa   |

| 3. Hand shower GB41103230, GB41103235 |           | 4. Spout GB41650288 (350 mm) |           |
|---------------------------------------|-----------|------------------------------|-----------|
| - Flow rate at 300 kPa:               | 0,175 l/s | - Flow rate at 300 kPa:      | 0,273 l/s |
| - Pressure at flow 0,1 l/s:           | 98 kPa    | - Pressure at flow 0,1 l/s:  | 40 kPa    |
| - Pressure at flow 0,2 l/s:           | 392 kPa   | - Pressure at flow 0,2 l/s:  | 161 kPa   |
| - Pressure at flow 0,33 l/s:          | N/A       | - Pressure at flow 0,33 l/s: | 437 kPa   |

Rev, 1, 2022-12-28 Gustavsberg Labb

Villeroy & Boch Gustavsberg AB / Box 400, 134 29 Gustavsberg / Phone +46 (0)8-570 391 00 / [www.gustavsberg.com](http://www.gustavsberg.com) / [info@gustavsberg.com](mailto:info@gustavsberg.com)