



Quality of life since 1825

Dušikomplekt Atlantic Square

150 c-c

Toote Omadused

SMART INSIDE SAFE TOUCH



- Safe Touch tehnoloogia vähendab segisti esikülje kuumenemist
- Reageerib koheselt voolusurve ja temperatuuri muutustele tagades ühtlase veetemperatuuri
- Komplektis peadušš Square

Article number

Art.nr.
GB41211335

EAN
7391530082813

Pakendiinfo

Pikkus: 745 mm | Laius: 368 mm | Kõrgus: 94 mm

Kaal: 4.95 kg

Number pakendis: 1 pc

Paigaldus ja hooldus

Enne paigaldamist tuleb torud kuni segistini puhtaks loputada. Segisti on ühendatud paremalt külma veetoruga ja vasakult kuumaveetoruga. Veesurve: max 1000 kPa, min 50 kPa. Kuuma vee temperatuur: max 80 °C, min 45 °C. Me ei vastuta valest paigaldusest tuleneva kahju eest.

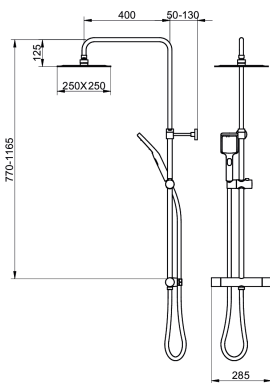
Energiamärgistus ja vastavustunnistused



CERTIFIERING
KONTROLL



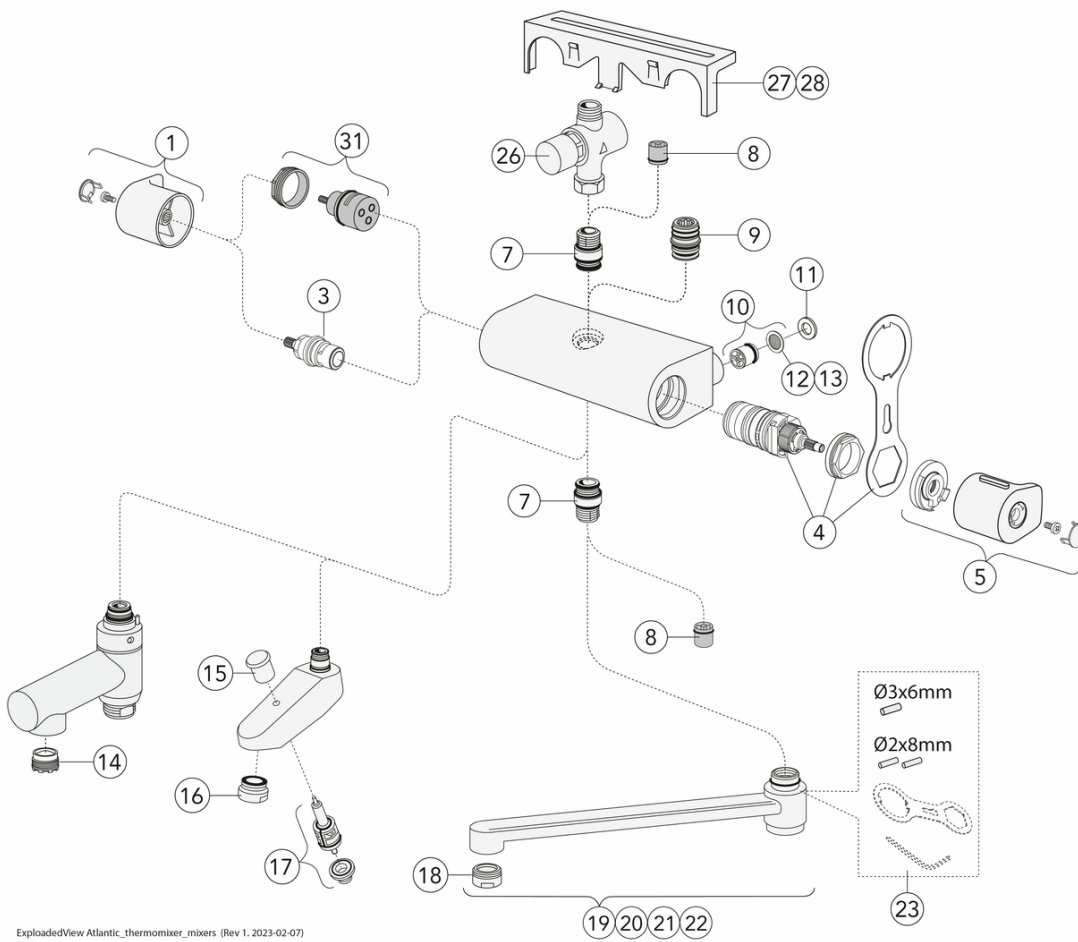
Denna produkt är anpassad till
Branschregler Säker Vatteninstallation
2021:1. Leverantören garanterar
produktens funktion om branschreglerna
och monteringsanvisningarna följs.



Tehniline info

- Max. tap capacity (at 300 kPa): 0,425 l/s
- Pressure loss with flow (0,33 l/s) 181 kPa
- Ühenduse mõõdud: 150 c-c

Varuosad



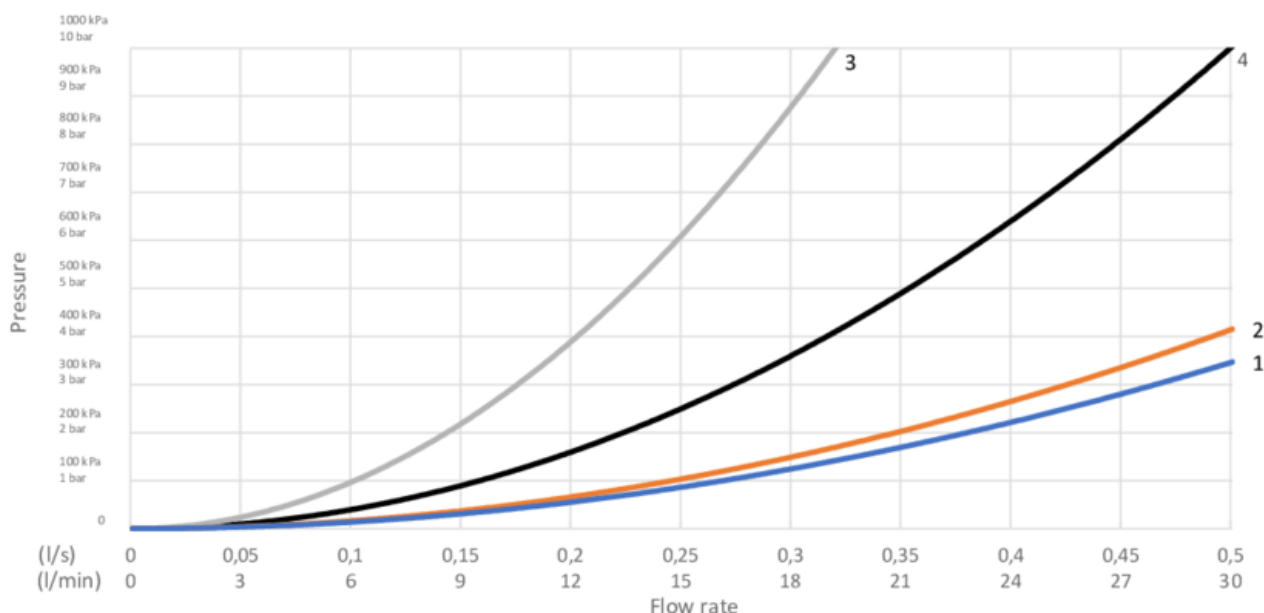
ExplodedView Atlantic_thermomixer_mixers (Rev 1. 2023-02-07)

Nr.	Toote	Art.nr.
1	Nupp Atlantic – veehulk	GB4165022501
3	Vooluhulga ventiil New Nautic	GB41650292001
4		GB41638334 01
5	Nupp Atlantic – temperatuur	GB4165022701
7	Nippel New Nautic	GB4165020401
8		GB41634719 01
9	Nippel New Nautic	GB4165020601
10		GB41632698 02
11	Tihend New Nautic	GB41650355
12		GB41635633 02
13		GB41635633 10
14		GB41638542 01
15		GB41636822 01
16		GB41634555 01
17		GB41636577 01
18		GB41630131 01
19	Pööratav jooksutoru 85 mm	GB41650279
20	Pööratav jooksutoru 150 mm	GB41650282
21	Pööratav jooksutoru 250 mm	GB41650285
22	Jooksutoru 350 mm	GB41650288
23		GB41633972
27	Riul	GB41650052
28	Riul	GB4165005253
31	Suundvahetaja New Nautic	GB4165021301

GUSTAVSBERG/

FLOW CHART/

Thermostatic Mixers, Shower Columns, Spout 350 mm



- 1. Max flow (bath- and shower outlet)
- 2. Head shower GB41103230, GB41103235
- 3. Hand shower GB41103230, GB41103235
- 4. Spout GB41650288 (350 mm)

1. Max flow (bath- and shower outlet)		2. Head shower GB41103230, GB41103235	
- Flow rate at 300 kPa:	0,465 l/s	- Flow rate at 300 kPa:	0,425 l/s
- Pressure at flow 0,1 l/s:	14 kPa	- Pressure at flow 0,1 l/s:	17 kPa
- Pressure at flow 0,2 l/s:	56 kPa	- Pressure at flow 0,2 l/s:	66 kPa
- Pressure at flow 0,33 l/s:	151 kPa	- Pressure at flow 0,33 l/s:	181 kPa

3. Hand shower GB41103230, GB41103235		4. Spout GB41650288 (350 mm)	
- Flow rate at 300 kPa:	0,175 l/s	- Flow rate at 300 kPa:	0,273 l/s
- Pressure at flow 0,1 l/s:	98 kPa	- Pressure at flow 0,1 l/s:	40 kPa
- Pressure at flow 0,2 l/s:	392 kPa	- Pressure at flow 0,2 l/s:	161 kPa
- Pressure at flow 0,33 l/s:	N/A	- Pressure at flow 0,33 l/s:	437 kPa

Rev, 1, 2022-12-28 Gustavsberg Labb

Villeroy & Boch Gustavsberg AB / Box 400, 134 29 Gustavsberg / Phone +46 (0)8-570 391 00 / www.gustavsberg.com / info@gustavsberg.com