



Quality of life since 1825

# Kitchen mixer Estetic

Lead-free

## Product features

LEAD-FREE



COLD-START



QUICK FIT



- Maximum flexibility with a pivoting spout, makes cooking and washing up easier. Locks for 0°, 60° and 110° are included
- Cold start technology for energy efficiency and comfort – eliminates unnecessary heat consumption and provides a safe mixer even for children
- Made from high quality materials and equipped with water saving technology to reduce environmental impact without compromising on performance or style

## Article numbers

Art-no.  
GB41208056

EAN  
7391530085715

## Packaging information

Length: 545 mm | Width: 350 mm | Height: 70 mm

Weight: 2.3 kg

Weight: 1 pc

## Assembling & Care

Prior to installation the lines must be flushed up to the faucet. The faucet is connected with the cold water line on the right and the hot water line on the left. Water pressure: max 1000 kPa, min 50kPa. Hot water temperature: max 80°C, min 45°C. Please note that we are not liable for damage resulting from improper installation.

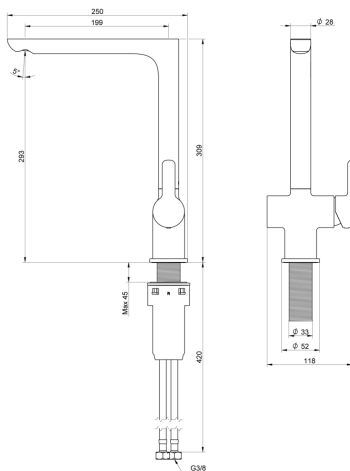
## Energy labeling and certifications



CERTIFIERING  
KONTROLL



Denna produkt är anpassad till  
Branschregler Saker Vatteninstallation  
2021:1. Leverantören garanterar  
produktens funktion om branschreglerna  
och monteringsanvisningarna följs.

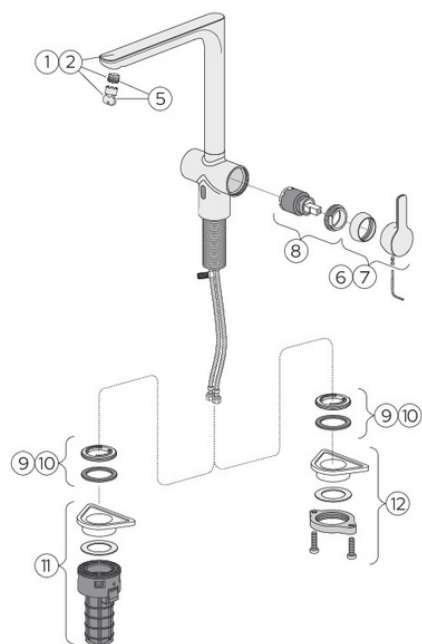


## Technical information

- Pressure, Flow & Temp: Maxflöde 300kPa: 0,1l/s
- Standard connection dimension: G3/8

## Spare parts

---



Exploded view Estetic\_kitchen\_L-spout  
(Rev 1, 2024-09-26)

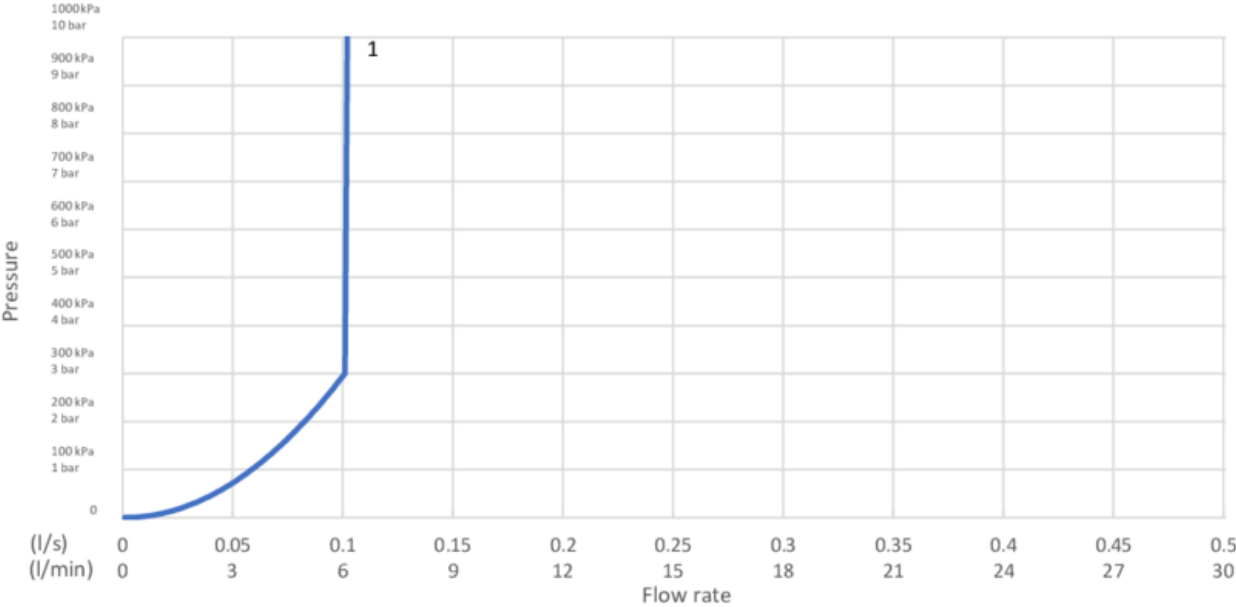
No.	Product	Art-no.
1	Straight spout Estetic kitchen	GB41650562
2	Straight spout Estetic kitchen	GB4165056253
5	Areator Estetic kitchen	GB41650573
6	Lever Estetic kitchen	GB41650559
7	Lever Estetic kitchen	GB4165055953
8	Cartridge Estetic kitchen	GB41650567
9	Basing Estetic kitchen	GB41650558
10	Basing Estetic kitchen	GB4165055853
11	Fast assembly nut Estetic kitchen	GB41650564

# GUSTAVSBERG/

## FLOW CHART/

### Estetic kök L-spout

GUSTAVSBERG /  
SMARTER BATHROOMS



**1. Max flow**

#### 1. Max flow

- Flowrate at 300 kPa:	0,1 l/s
- Pressure at flow 0,1 l/s:	300 kPa
- Pressure at flow 0,2 l/s:	N/A
- Pressure at flow 0,33 l/s:	N/A

Rev, 1, 2024-08-07 Gustavsberg Labb

Villeroy & Boch Gustavsberg AB / Box 400, 134 29 Gustavsberg / Phone +46 (0)8-570 391 00 / [www.gustavsberg.com](http://www.gustavsberg.com) / [info@gustavsberg.com](mailto:info@gustavsberg.com)