



Quality of life since 1825

Shower column Public.

Time valve, 150 c-c.

Product features

SMART INSIDE SAFE TOUCH



- Timed pressure valve flush time approx. 30 sec.
- Flow 8L/min
- Built-in automatic hot water shut-off for scalding protection

Article numbers

Art-no.
GB41212360

EAN
7391530090955

Packaging information

Length: 745 mm | Width: 368 mm | Height: 94 mm

Weight: 3.89 kg

Weight: 1 pc

Assembling & Care

Prior to installation the lines must be flushed up to the faucet. The faucet is connected with the cold water line on the right and the hot water line on the left. Water pressure: max 1000 kPa, min 50kPa. Hot water temperature: max 80°C, min 45°C. Please note that we are not liable for damage resulting from improper installation.

Energy labeling and certifications



CERTIFIERING
KONTROLL

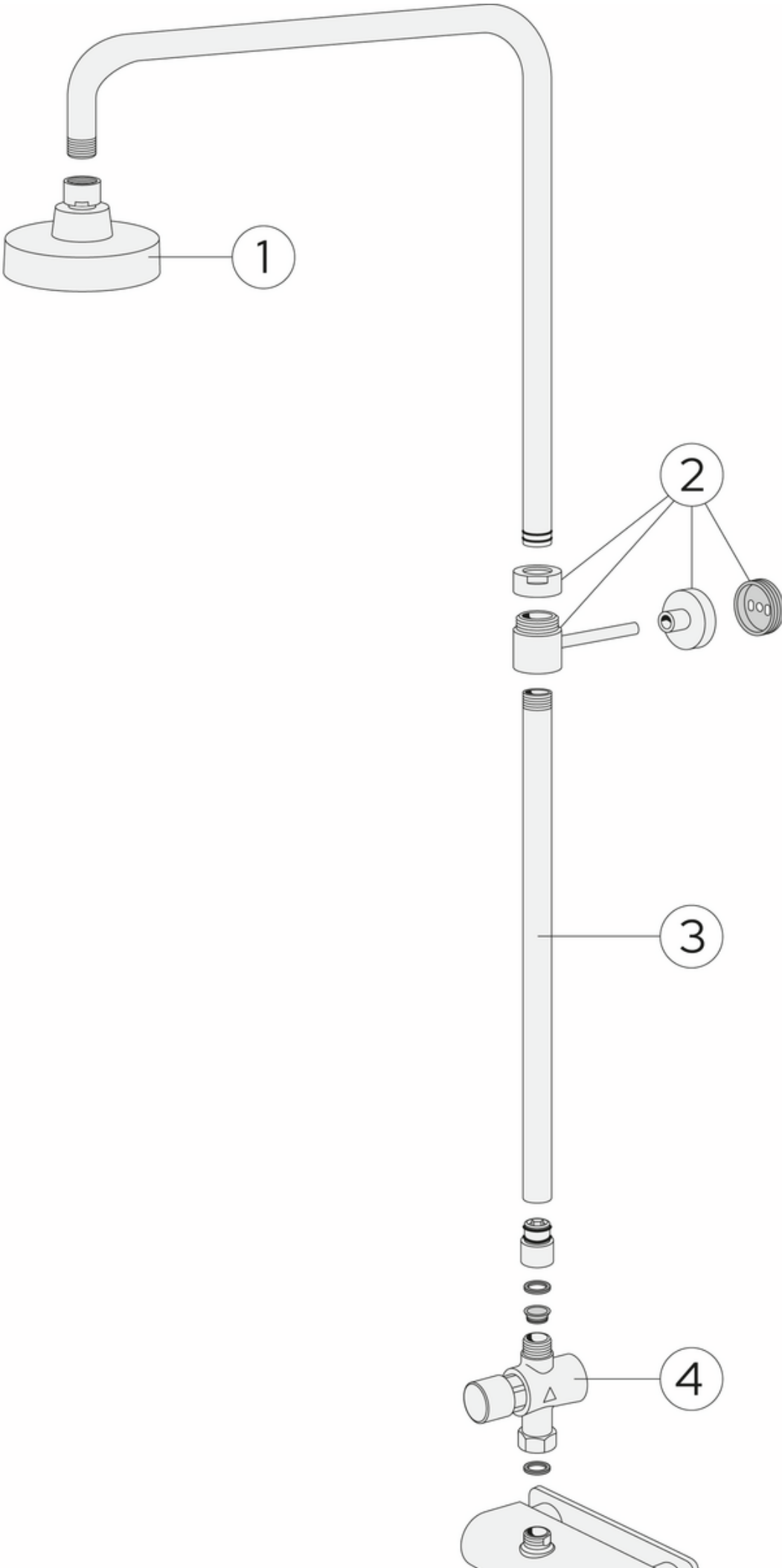


Denna produkt är anpassad till
Branschregler Saker Vatteninstallation
2021:1. Leverantören garanterar
produktens funktion om branschreglerna
och monteringsanvisningarna följs.



Technical information

- Max. tap capacity (at 300 kPa): 0,113 l/s
- Pressure loss with flow (0,1 l/s) 128 kPa

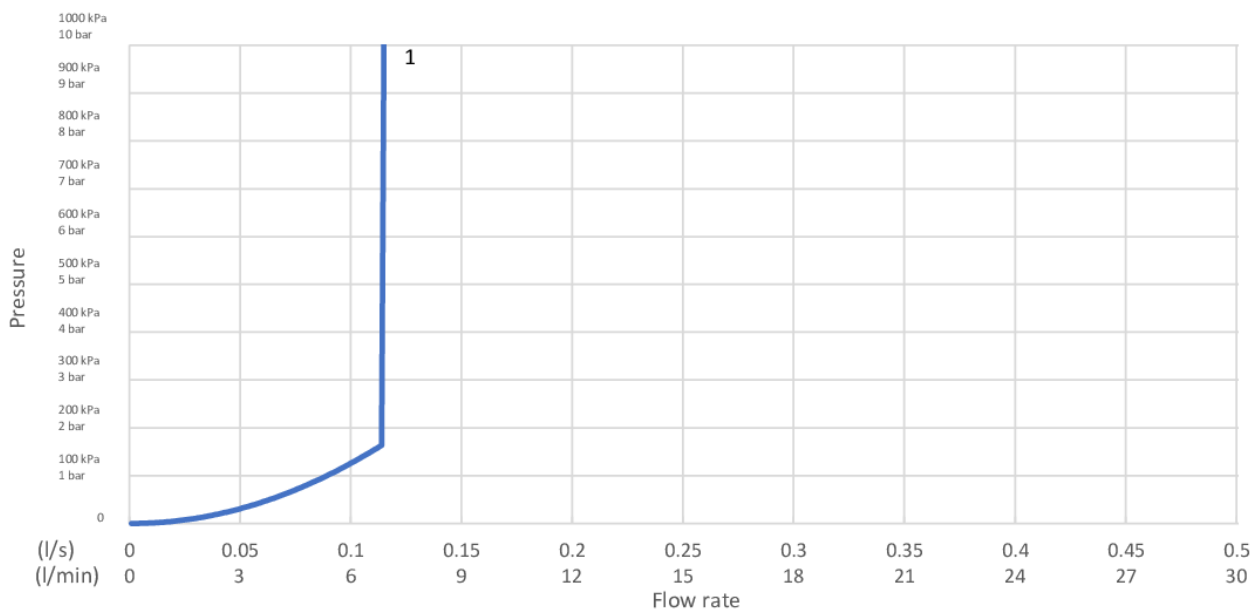


| No. | Product | Art-no. |
|-----|---|------------|
| 1 | Head shower Public | GB41650684 |
| 2 | Wall bracket Round/Square | GB41639444 |
| 3 | Shower bar - extension 1060 mm Round/Square | GB41639512 |
| 4 | Time Valve | GB41639716 |

GUSTAVSBERG/

FLOW CHART/

Duschset Public



1. GB41202360, GB41212360, GB41103360

1. GB41202360, GB41212360, GB41103360

| | |
|------------------------------|-----------|
| - Flowrate at 300 kPa: | 0,113 l/S |
| - Pressure at flow 0,1 l/s: | 128 kPa |
| - Pressure at flow 0,2 l/s: | N/A |
| - Pressure at flow 0,33 l/s: | N/A |

Rev, 1, 2025-08-29 Gustavsberg Labb

Villeroy & Boch Gustavsberg AB / Box 400, 134 29 Gustavsberg / Phone +46 (0)8-570 391 00 / www.gustavsberg.com / info@gustavsberg.com